

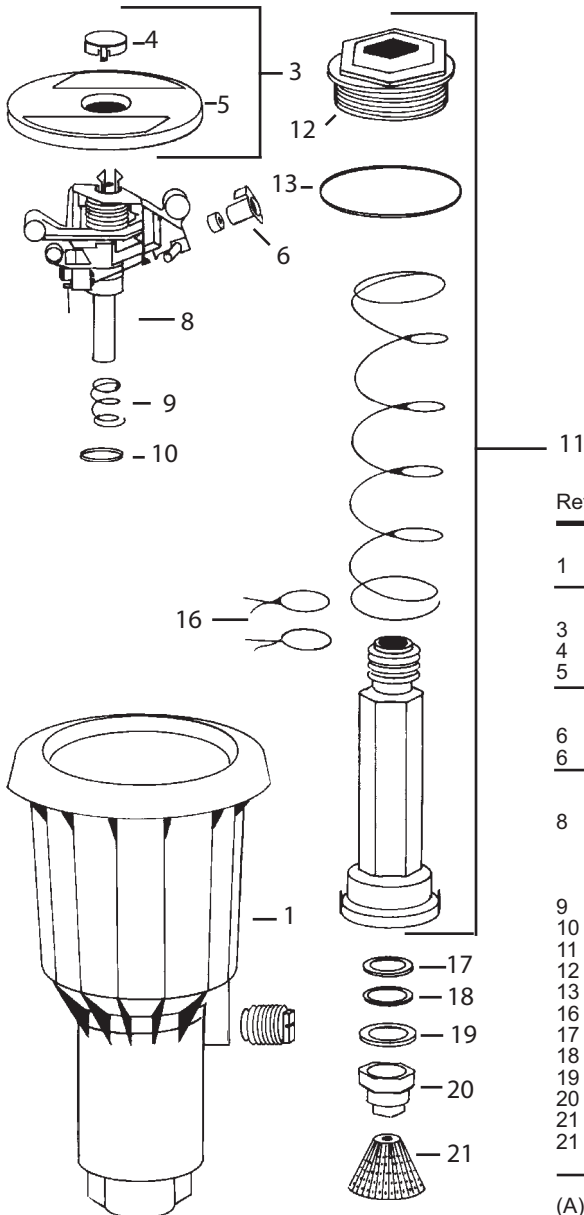
PART CIRCLE ROTOR

MINI-PAW / MAXI-PAW / MAXI-PAW-SAM

Ref No. : 401

Date : 03/2005

Page : 1 of 1



Ref.	Part Description	Mini-Paw	Maxi-Paw	Maxi-Paw-SAM
CASES				
1	Case Assembly With Plug	205175	20728101	20728101
COVER ASSEMBLIES				
3	Cover Kit	206973	208001	208001
4	Dust Cap	(A)	—	—
5	Cover, Snap On	(A)	—	—
NOZZLES (B)				
6	Low Angle (07, 10)	—	115902-XX	115902-XX
6	Standard Nozzle (06, 07, 08, 10, 12)	—	206592-XX	206592-XX
INTERNAL ASSEMBLY				
8	Head Assembly	206678-09 (A)	206644-08 (A)	206637-08 (A)
	Diffuser Screw	203933	203933	203933
	Trip Spring	207740	207740	207740
	Bearing Hood (Black)	(C)	(C)	(C)
9	Upthrust Spring	(C)	(C)	(C)
10	Bearing Washer (Blue)	(C)	(C)	(C)
11	Pop-Up Sleeve Assembly	202415	202415	204400
12	Guide Nut	204555	204555	204555
13	O-Ring Seal	202011	202011	202011
16	Friction Collars (2)	203148	203148	203148
17	Buna N Washer	(C)	(C)	(C)
18	Wearing Washer	(C)	(C)	(C)
19	Brg Backup Washer	(C)	(C)	(C)
20	Body Retainer	(C)	(C)	(C)
21	Inlet Screen (Standard)	202076	202076	—
21	SAM Screen/Seal Assembly	—	—	205396

- (A) Included in Body Cover Assembly # 206974-09
 (B) Specify nozzle size when ordering.
 (C) Included in Bearing Washer Kit # 202190.

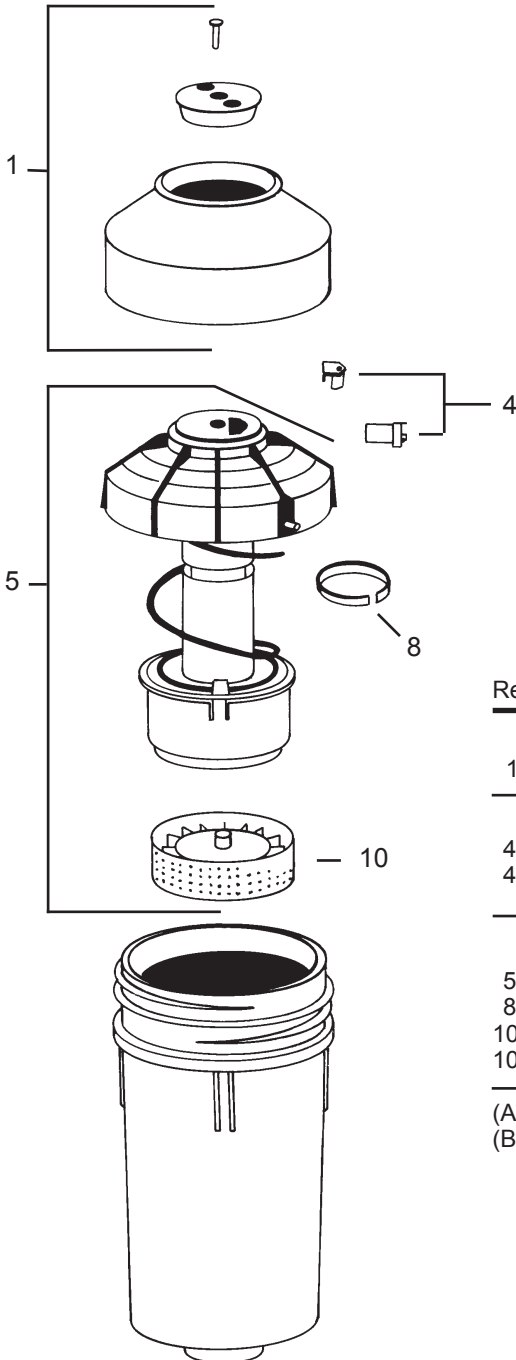
PART CIRCLE ROTOR

R-50-SAM-RC / R-50-S / R-50

Ref. No. : 403

Date : 03/2005

Page : 1 of 1



R-50-S

R-50

R-50-SAM-RC

Ref.	Part Description	R-50-C		
		R-50 R-50-LA	R-50-SAM-RC R-50-C-LA	R-50-S R-50-S-LA
COVER ASSEMBLIES				
1	Rubber Cover Assembly	—	A49119	—
NOZZLES (A)				
4	Standard Nozzle Kit (15, 20, 30,40,60)	A49300-XX	A49300-XX	A49300-XX
4	Rain Curtain Kit (15, 20, 30,40,60)	A49301-XX	A49301-XX	A49301-XX
INTERNAL ASSEMBLY (Adjustable Bypass Version)				
5	Standard Angle	114160	(B)	—
8	Vandal Collar	109852	109852	109852
10	SAM Screen	—	114422	—
10	STD Screen	113527	—	113527

(A) Specify Nozzle when ordering.

(B) 114160 +114422

PART CIRCLE ROTOR

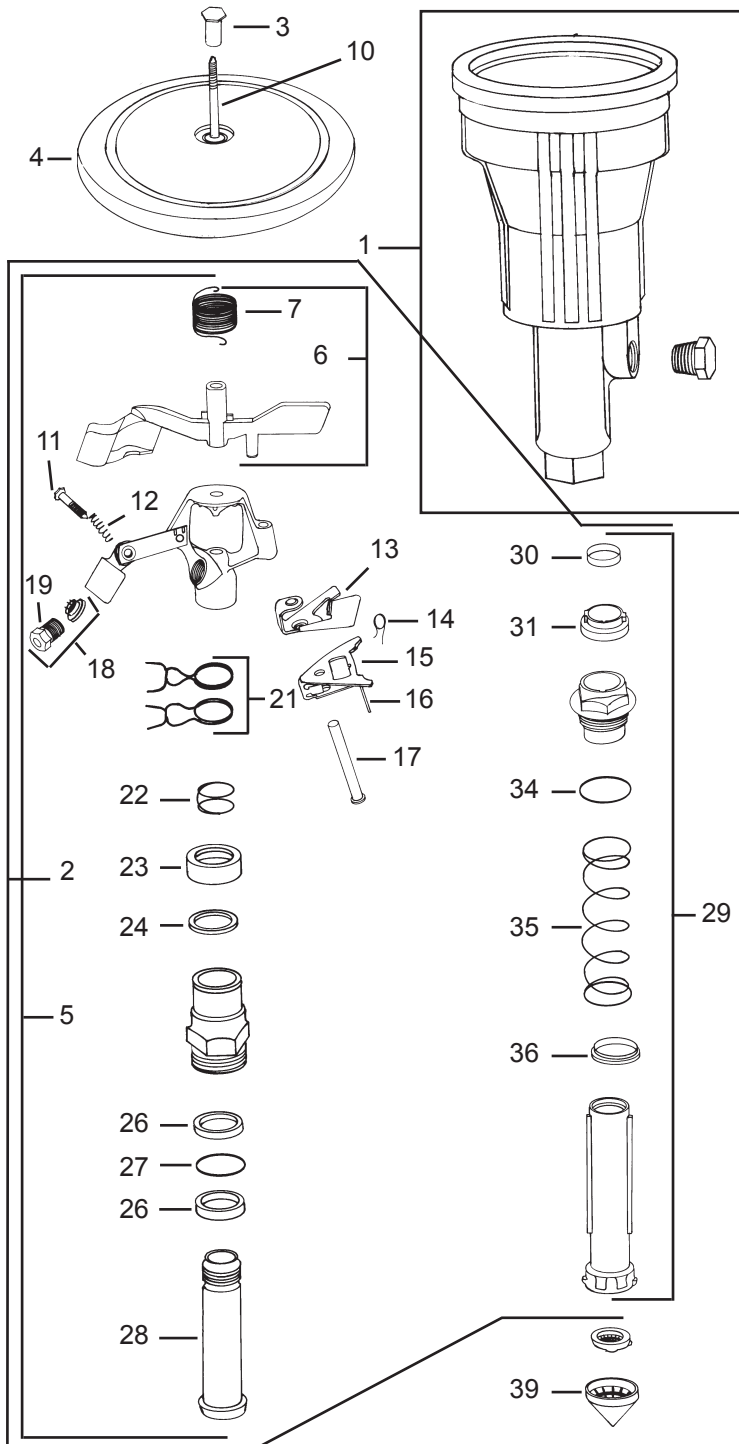
15111A / 15111B



Ref. No. : 405

Date : 03/2005

Page : 1 of 1



Ref.	Part Description	15111A	15111B
CASE			
1	Case Assembly With Plug	102452	102452
COVER ASSEMBLY			
3	Cover Retainer	100781	100781
4	Cover	100039	100039
INTERNAL ASSEMBLY			
2	Internal Assembly	110255-10	110255-10
5	Head Assembly	110256-10	110256-10
UPPER ASSEMBLY			
6	Arm Spring Assembly	115325	115325
7	Arm Spring	104933	104933
10	Fulcrum Pin	100780	100780
3	Cover Retainer	100781	100781
11	Adjustment Pin	—	100203
12	Spring	—	100136
TRIP MECHANISM			
13	Upper Trip	108994	108994
14	Trip Spring	105720	105720
15	Lower Trip Assembly	110124	110124
16	Trip Lever	109484	109484
17	Trip Pin Kit	107075	107075
NOZZLES (B)			
18	Nozzle Assembly	—	106160
19	Standard Nozzle	—	105780
	Adjustable Nozzle Assembly	101092	—
	DA Nozzle	101093	—
BEARING ASSEMBLY			
21	Friction Collars	104906	104906
22	Bearing Spring	100182	100182
23	Skirted Top Seal (Black)	100180	100180
24	Teflon Top Seal (White)	100181	100181
26	Bearing Washer (Black)	104181	104181
27	Wear Washer (White)	104696	104696
26	Bearing Washer (Black)	104181	104181
28	Bearing Nipple	100178	100178
29	Guide Sleeve Assembly	104520	104520
30	Expansion Band	(C)	(C)
31	Upper Guide Seal	(C)	(C)
34	O-Ring	(C)	(C)
35	Retract Spring	(C)	(C)
36	Lower Guide Seal	(C)	(C)
39	Inlet Screen	103457	103457

(B) Specify nozzle size when ordering.
 (C) Included in Bearing Kit # 114564

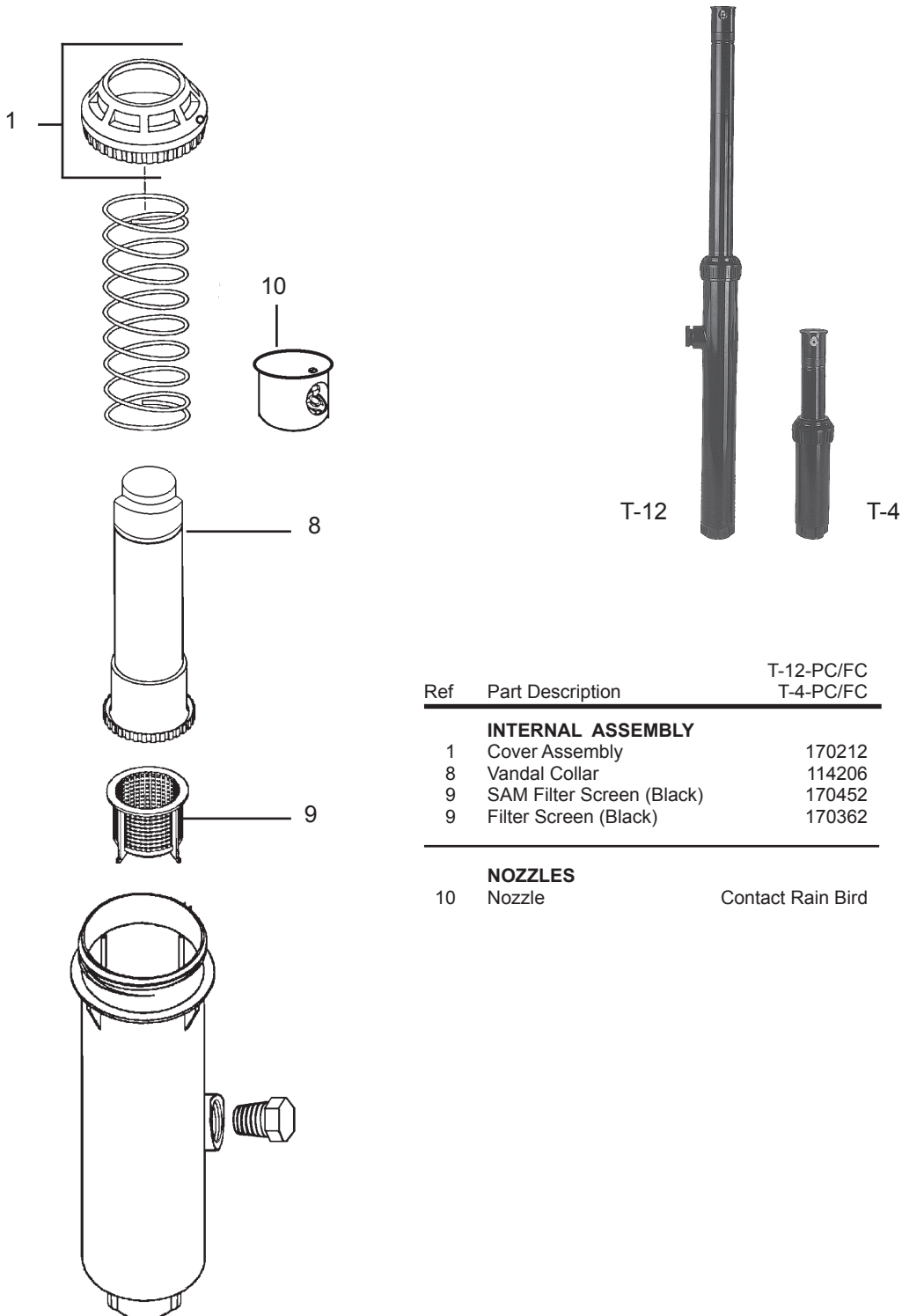
PART / FULL CIRCLE ROTOR

T-BIRD SERIES

Ref. No. : 408

Date : 03/2005

Page : 1 of 1



Ref	Part Description	T-12-PC/FC T-4-PC/FC
INTERNAL ASSEMBLY		
1	Cover Assembly	170212
8	Vandal Collar	114206
9	SAM Filter Screen (Black)	170452
9	Filter Screen (Black)	170362
NOZZLES		
10	Nozzle	Contact Rain Bird

PART CIRCLE ROTOR

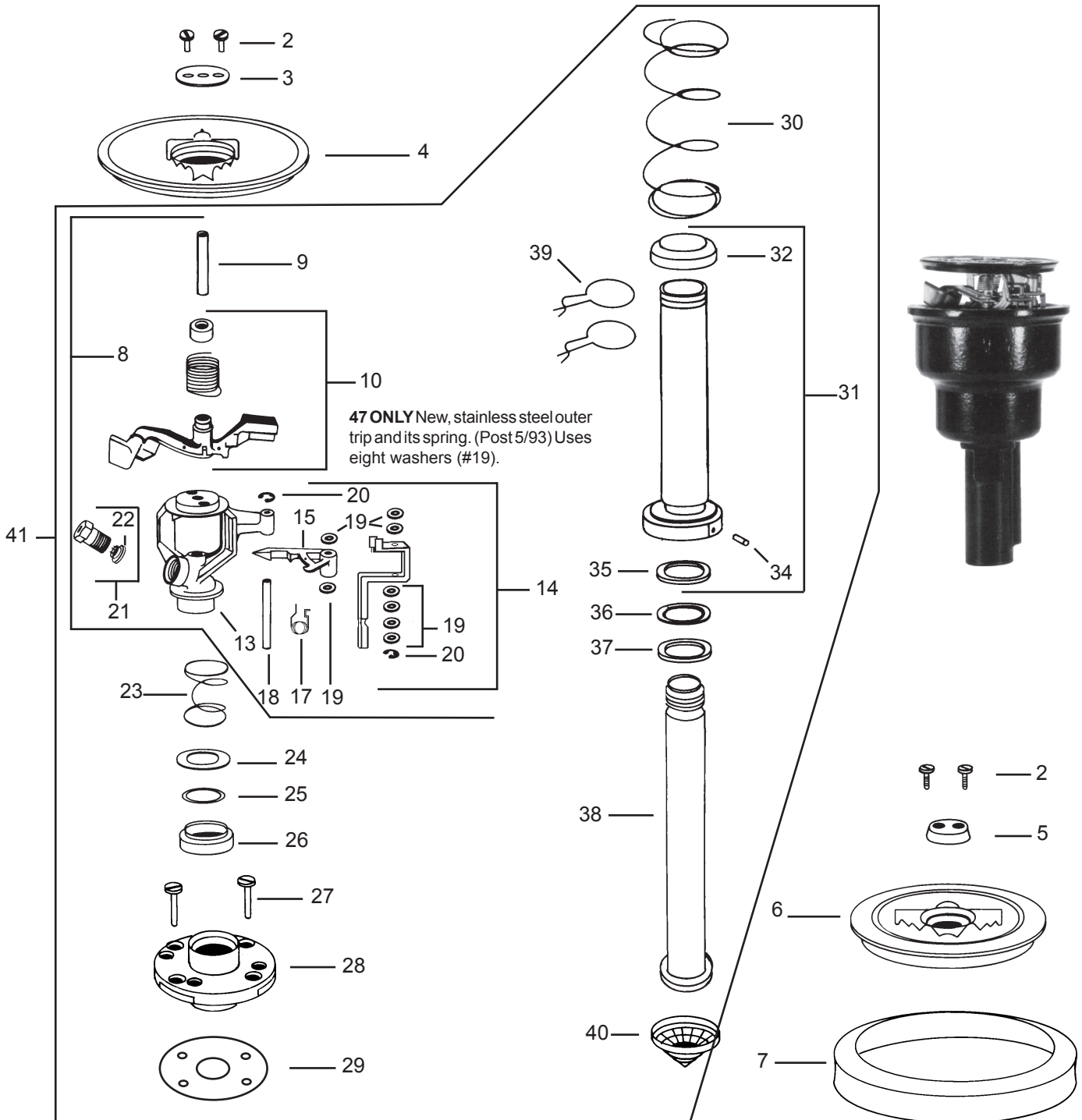
27A / 37A / 47A SERIES

27AP / 37AP / 47AP SERIES

Ref. No. : 414

Date : 03/2005

Page : 1 of 2



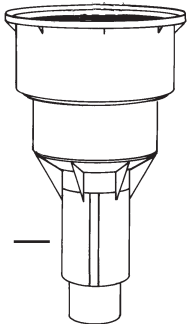


PART CIRCLE ROTOR
27A / 37A / 47A SERIES
27AP / 37AP / 47AP SERIES

Ref. No. : 414

Date : 03/2005

Page : 2 of 2



Ref. Part Description	27A 27ARC	37A 37ARC	47A 47ARC	27AP 27APRC	37AP 37APRC	47AP 47APRC
CASES						
1 Plastic Case (BSP)	—	—	—	203789-02	203789-02	203789-02
COVER ASSEMBLIES						
2 Cover Screws, Standard	200974	200974	200974	200974	200974	200974
3 Cover Screws, Vandal Resistant	200829	200829	200829	200829	200829	200829
3 Retainer, Steel	200740	200740	200740	200740	200740	200740
4 Aluminum Cover	200415	200415	200415	—	—	—
4 Plastic Cover	—	—	—	208227	208227	208227
5 Retainer, Rubber	200741	200741	200741	200741	200741	200741
6 Rubber Cover	200500	200500	200500	200500	200500	200500
7 Rubber Case Ring	200053	200053	200053	200053	200053	200053
41 INTERNAL ASSEMBLY	202061-10	200127-14	200131-16	202061-10	200127-14	200131-16
UPPER ASSEMBLY						
8 Arm/Body Assembly	202062-10	200126-14	200130-16	202062-10	200126-14	200130-16
9 Fulcrum Pin	200025	200025	200076	200025	200025	200076
10 Arm Spring Assembly	203723	203724	203725	203723	203724	203725
13 Body	200055	200055	200092	200055	200055	200092
TRIP MECHANISM (Included in Arm/Body Assembly)						
14 Trip Assembly	203718	203718	203719	203718	203718	203719
15 Inner Trip	200060	200060	200060	200060	200060	200060
17 Trip Spring	207750	207750	209363	207750	207750	209363
18 Trip Shaft	200061	200061	201932	200061	200061	201932
19 Spacer Washers (2-27,37)(8-47)	201933	201933	201933	201933	201933	201933
20 E-Ring (2)	—	—	200975	—	—	200975
NOZZLES (A) (Included in Arm/Body Assembly)						
ADJ Nozzle Assembly	201559	201559	—	201559	201559	—
Spring	100136	100136	—	100136	100136	—
Adjustment Pin	100203	100203	—	100203	100203	—
21 Range Nozzle Assembly	—	—	200079	—	—	200079
22 Vane	—	—	202143	—	—	202143
BEARING ASSEMBLY						
23 Bearing Spring	(C) —	(C) —	(C) —	(C) —	(C) —	(C) —
24 Steel Top Seal Washer	(C) —	(C) —	(C) —	(C) —	(C) —	(C) —
25 Teflon Top Seal Washer (White)	(D) —	(D) —	(D) —	(D) —	(D) —	(D) —
26 Buna-N Guide Seal (Black)	(C) —	(C) —	(C) —	(C) —	(C) —	(C) —
27 Guide Screws	200967	200967	200967	206453	206453	206453
28 Bearing Guide	202166	202166	202166	202166	202166	202166
29 Bearing Guide Gasket	200044	200044	200044	206261	206261	206261
30 Retract Spring	201113	201113	201113	201113	201113	201113
31 Bearing Sleeve Assembly	202068	202068	202068	202068	202068	202068
32 Buna-N Lower Seal (Black)	(D) —	(D) —	(D) —	(D) —	(D) —	(D) —
34 Bearing Sleeve Pin	200064	200064	200064	200064	200064	200064
35 Wear Ring (Gold)	(D) —	(D) —	(D) —	(D) —	(D) —	(D) —
36 Teflon Speed Washer (White)	(D) —	(D) —	(D) —	(D) —	(D) —	(D) —
37 Buna-N Washer Seal (Gray)	(D) —	(D) —	(D) —	(D) —	(D) —	(D) —
38 Bearing Nipple	200037	200037	200037	200037	200037	200037
39 Friction Collars	200164	200164	200164	200164	200164	200164
40 Inlet Screen	200006	200006	200006	200006	200006	200006

(A) Specify nozzle size when ordering.

(C) Included in Bearing Spring Washer Kit # 203731.

(D) Included in Bearing Washer Kit # 203732.

FULL CIRCLE ROTOR

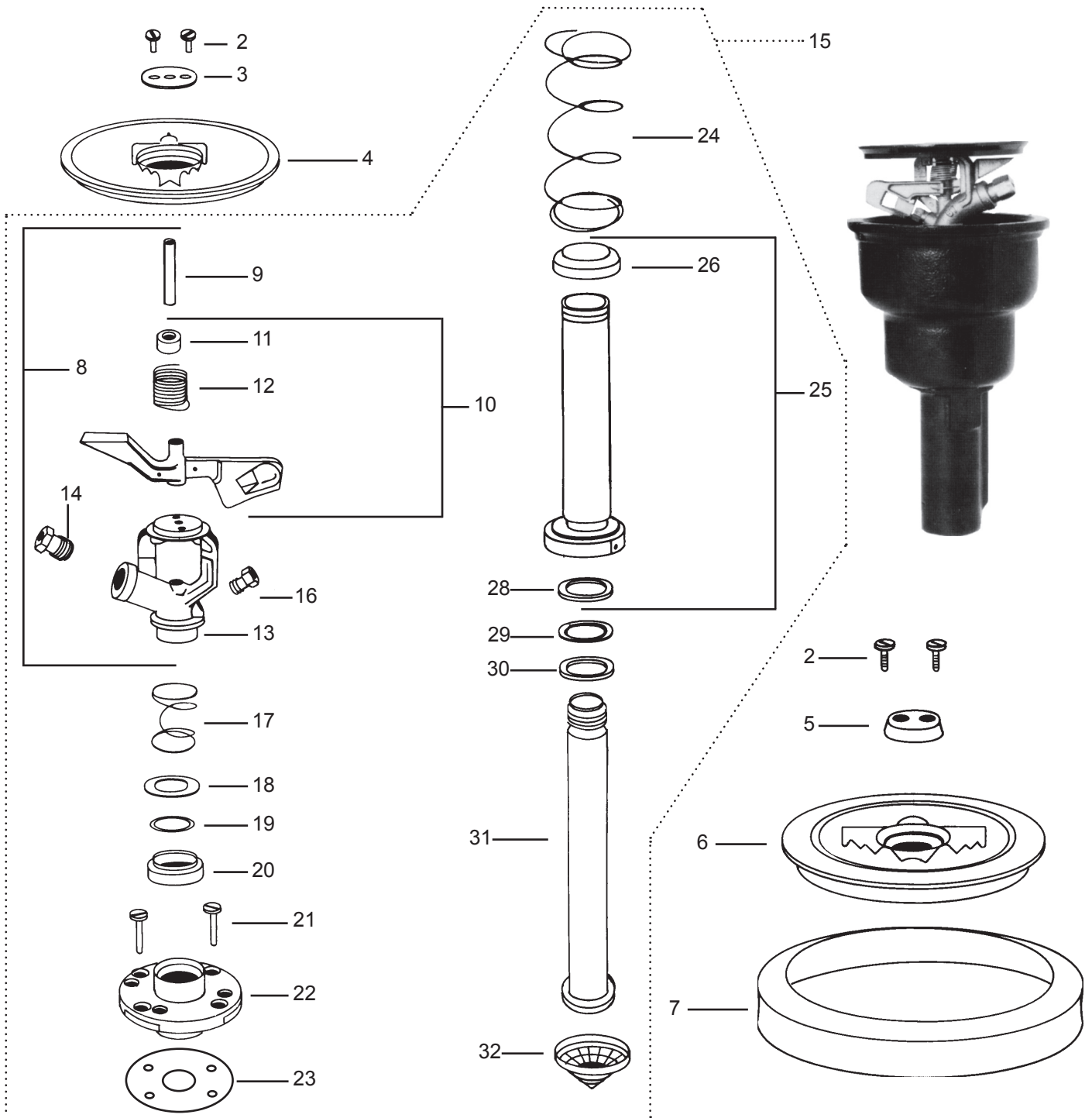
21A / 31A / 41-51A SERIES

21AP / 31AP / 41-51AP SERIES

Ref. No.: 416

Date : 03/2005

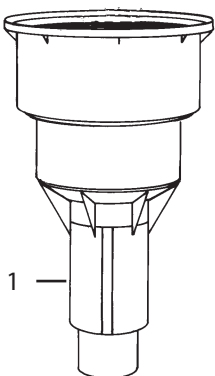
Page : 1 of 2



FULL CIRCLE ROTOR
21A / 31A / 41-51A SERIES
21AP / 31AP / 41-51AP SERIES

Ref. No.: 416
 Date : 03/2005
 Page : 2 of 2

Ref.	Part Description	21A 21A-RC	31A 31A-RC	41-51A 41-51A-RC	21AP 21AP-RC	31AP 31AP-RC	41-51AP 41-51AP-RC
CASES							
1	Plastic Case (BSP)	—	—	—	203789-02	203789-02	203789-02
COVER ASSEMBLIES							
2	Cover Screws, Standard	200974	200974	200974	200974	200974	200974
	Cover Screws, (Vandal Resistant)	200829	200829	200829	200829	200829	200829
3	Retainer, Steel	200740	200740	200740	200740	200740	200740
4	Aluminum Cover	200415	200415	200415	—	—	—
4	Plastic Cover	—	—	—	208227	208227	208227
5	Retainer, Rubber	200741	200741	200741	200741	200741	200741
6	Rubber Cover	200500	200500	200500	200500	200500	200500
7	Rubber Case Ring	200053	200053	200053	200053	200053	200053
15	INTERNAL ASSEMBLY (includes # 8 to # 32)	200121-10	200125-14	200133-14-11	200121-10	200125-14	200133-14-11
UPPER ASSEMBLY							
8	Arm/Body Assembly	200118-10	200124-14	200132-14-11	200118-10	200124-14	200132-14-11
9	Fulcrum Pin	200025	200025	200076	200025	200025	200076
10	Arm Spring Assembly	203723	203727	203728	203723	203727	203728
11	Arm Hood	—	—	—	—	—	—
12	Arm Spring	—	—	—	—	—	—
13	Body	200026	200026	200101	200026	200026	200101
NOZZLES (A)							
	ADJ Nozzle Assembly	201559	201559	—	201559	201559	—
	Spring	100136	100136	—	100136	100136	—
	Adjustment Pin	100203	100203	—	100203	100203	—
14	Plastic Range Nozzle w/vane	—	—	211203	—	—	211203
16	Special Drive Nozzle	—	—	201108	—	—	201108
BEARING ASSEMBLY							
17	Bearing Spring	(B)	(B)	(B)	(B)	(B)	(B)
18	Steel Top Seal Washer	(B)	(B)	(B)	(B)	(B)	(B)
19	Teflon Top Seal Wshr (Wht)	(C)	(C)	(C)	(C)	(C)	(C)
20	Buna-N Guide Seal (Blk)	(B)	(B)	(B)	(B)	(B)	(B)
21	Guide Screws	200967	200967	200967	206453	206453	206453
22	Bearing Guide	202166	202166	202166	202166	202166	202166
23	Bearing Guide Gasket	200044	200044	200044	206261	206261	206261
24	Retract Spring	201113	201113	201113	201113	201113	201113
25	Bearing Sleeve Assembly	202068	202068	202068	202068	202068	202068
26	Buna-N Lower Seal	(C)	(C)	(C)	(C)	(C)	(C)
28	Wear Ring (Gold)	(C)	(C)	(C)	(C)	(C)	(C)
29	Teflon Speed Washer (White)	(C)	(C)	(C)	(C)	(C)	(C)
30	Buna-N Washer Seal (Gray)	(C)	(C)	(C)	(C)	(C)	(C)
31	Bearing Nipple	200037	200037	200037	200037	200037	200037
32	Inlet Screen	200006	200006	200006	200006	200006	200006



(A) Specify nozzle size when ordering.
 (B) Included in Upper Bearing Washer Kit # 203731.
 (C) Included in Bearing Washer Kit # 203732.

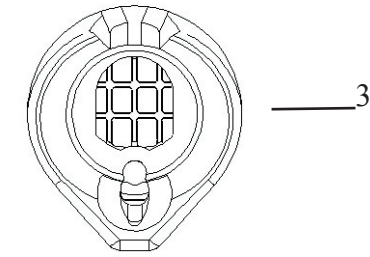
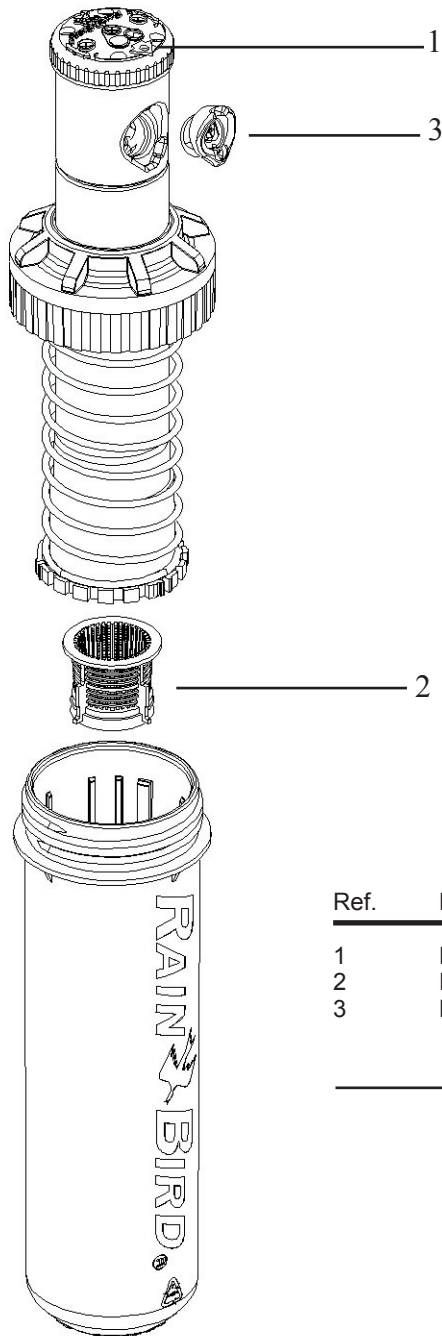
FULL CIRCLE ROTOR

5505 SERIES ROTORS

Ref. No. : 417

Date : 03/2005

Page : 1 of 1



5500 Series Nozzle

Ref.	Part Description	5505
1	Radius Adjustment Screw	231491-S
2	Filter Screen w/SAM Assy	232653-S
3	Nozzles (02, 03, 04, 05, 06, 08, 10, 12)	B82400-XX

FULL / PART CIRCLE ROTORS

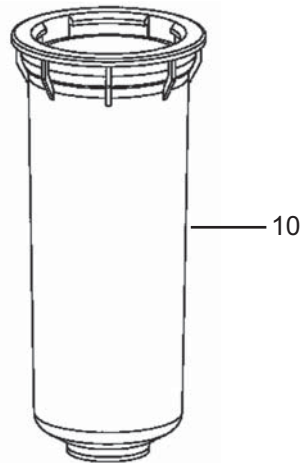
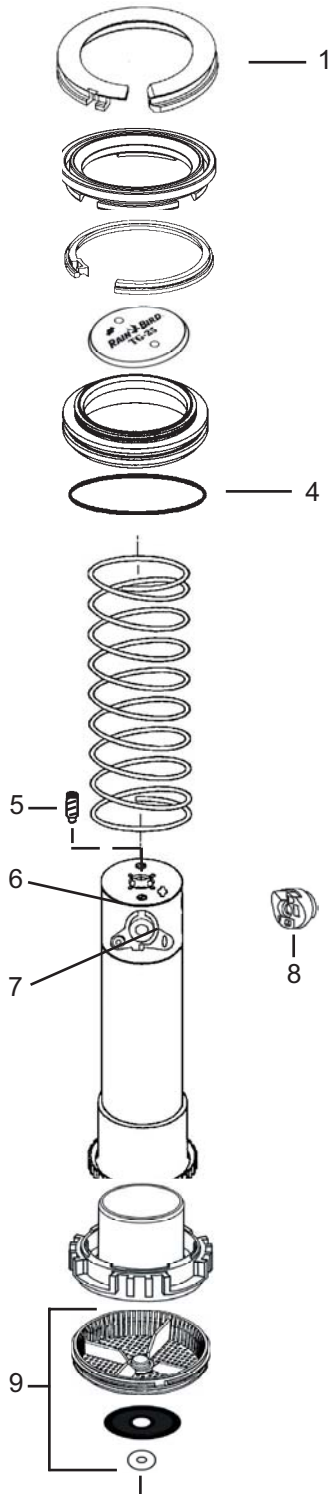
TG-25 ROTORS



Ref. No.: 425

Date: 03/2005

Page: 1 of 1



Ref. Part Description

TG-25

SNAP RINGS

1	Snap Cover	211921-01
---	------------	-----------

INTERNAL ASSEMBLY

4	O-Ring, Bearing Guide	211242
5	Radius Adjustment Screw	208751
9	SAM & Screen Assy	212120

NOZZLES

6	Nozzle, Rain Curtain (>8/99) (A)	B81600-XX
7	3 rd Port Nozzle (>8/99)	231777
8	Round Nozzle (<8/99) (A)	B00500-XX

CASE

10	Case (BSP)	211489-02
----	------------	-----------

(A) Specify Nozzle Size when ordering. Available in #04, 06, 08, 10, 12.

PART CIRCLE ROTOR

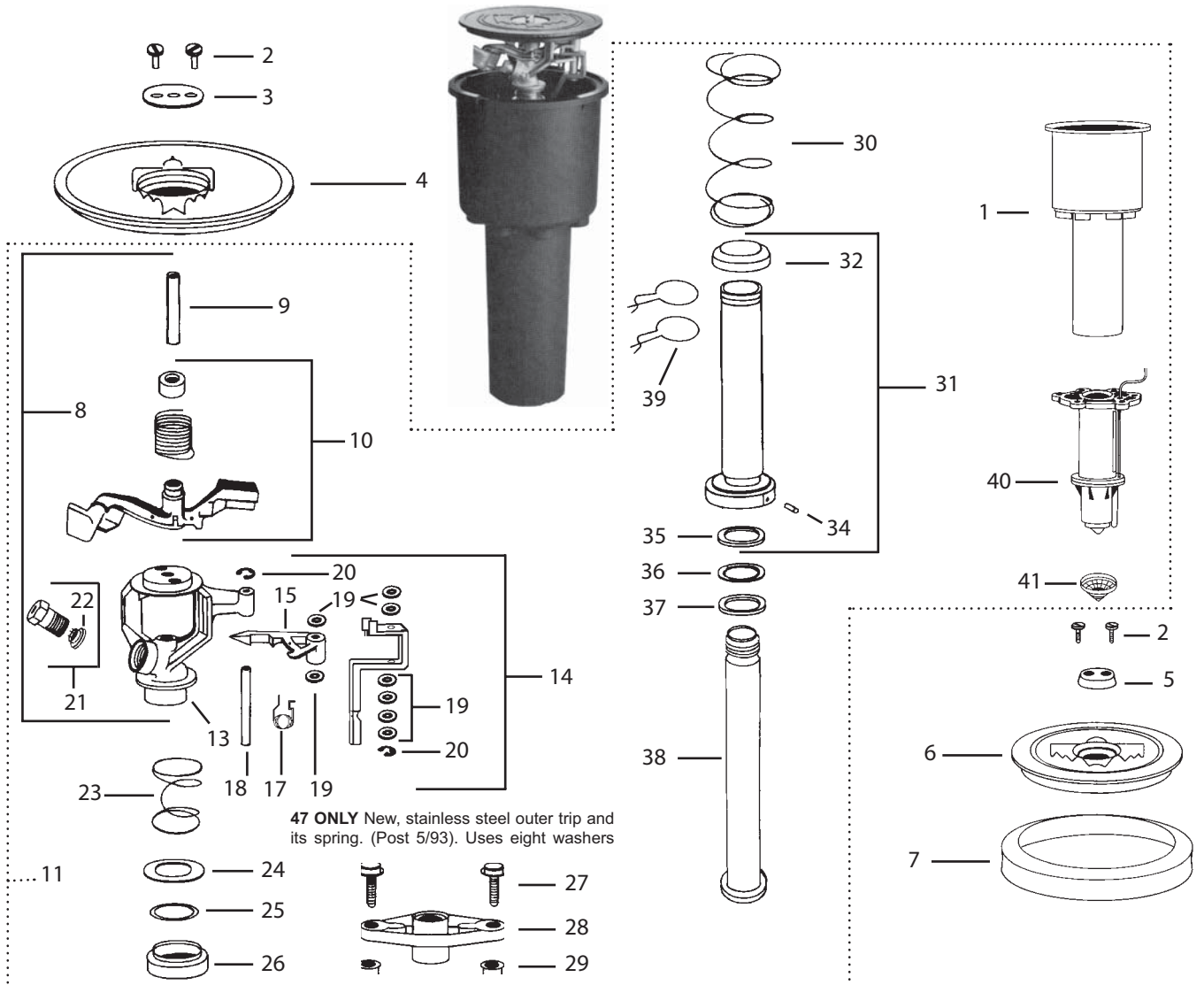
27A / 37A / 47A SAM SERIES

27A / 37A / 47A VIH-E SERIES

Ref. No. : 426

Date : 03/2005

Page : 1 of 2



Ref.	Part Description	27ASAM 27ASAM-RC	37ASAM 37ASAM-RC	47ASAM 47ASAM-RC	27A-VIH-E 27A-VIH-E-RC	37A-VIH-E 37A-VIH-E-RC	47A-VIH-E 47A-VIH-E-RC
CASES							
1	1" Plastic Case (BSP)	201283-02	201283-02	201283-02	—	—	—
COVER ASSEMBLIES							
2	Cover Screws, Standard	200974	200974	200974	200974	200974	200974
	Cover Screws, Vandal Resistant	200829	200829	200829	200829	200829	200829
3	Retainer, Steel	200740	200740	200740	200740	200740	200740
4	Plastic Cover	208227	208227	208227	208227	208227	208227
5	Retainer, Rubber	200741	200741	200741	200741	200741	200741
6	Rubber Cover	200500	200500	200500	200500	200500	200500
7	Rubber Case Ring	200053	200053	200053	200053	200053	200053



PART CIRCLE ROTOR
27A / 37A / 47A SAM SERIES
27A / 37A / 47A VIH-E SERIES

Ref. No. : 426

Date : 03/2005

Page : 2 of 2

Ref.	Part Description	27ASAM 27ASAM-RC	37ASAM 37ASAM-RC	47ASAM 47ASAM-RC	27A-VIH-E 27A-VIH-E-RC	37A-VIH-E 37A-VIH-E-RC	47A-VIH-E 47A-VIH-E-RC
11	INTERNAL ASSEMBLY	—	—	201328-16	—	—	201328-16
	UPPER ASSEMBLY						
8	Arm/Body Assembly	202062-10	200126-14	200130-16	202062-10	200126-14	200130-16
9	Fulcrum Pin	200025	200025	200076	200025	200025	200076
10	Arm Spring Assembly	203723	203724	203725	203723	203724	203725
13	Body 200055	200055	200092	200055	200055	200092	
	TRIP MECHANISM						
14	Trip Assembly	203718	203718	203719	203718	203718	203719
15	Inner Trip	200060	200060	200060	200060	200060	200060
17	Trip Spring	207750	207750	209363	207750	207750	209363
18	Trip Shaft	200061	200061	201932	200061	200061	201932
19	Spacer Washers (2-27,37)(8-47)	201933	201933	201933	201933	201933	201933
20	E-Ring	—	—	200975	—	—	200975
	NOZZLES (C)						
	ADJ Nozzle Assembly	201559	201559	—	201559	201559	—
	Spring	100136	100136	—	100136	100136	—
	Adjustment Pin	100203	100203	—	100203	100203	—
21	Range Nozzle Assembly	—	—	200079	—	—	200079
22	Vane	—	—	202143	—	—	202143
	BEARING ASSEMBLY						
23	Bearing Spring	(D)	(D)	(D)	(D)	(D)	(D)
24	Steel Top Seal Washer	(D)	(D)	(D)	(D)	(D)	(D)
25	Teflon Top Seal Washer (White)	(E)	(E)	(E)	(E)	(E)	(E)
26	Buna-N Guide Seal (Black)	(D)	(D)	(D)	(D)	(D)	(D)
27	Guide Screws (Current Self Tapping)	204090	204090	204090	204090	204090	204090
28	Bearing Guide	207416	207416	207416	207416	207416	207416
29	Guide Bushings (Current Style Only)	204308	204308	204308	204308	204308	204308
30	Retract Spring	201113	201113	201113	201113	201113	201113
31	Bearing Sleeve Assembly	202068	202068	202068	202068	202068	202068
32	Buna-N Lower Seal (Black)	(E)	(E)	(E)	(E)	(E)	(E)
34	Bearing Sleeve Pin	200064	200064	200064	200064	200064	200064
35	Wear Ring (Gold)	(E)	(E)	(E)	(E)	(E)	(E)
36	Teflon Speed Washer (White)	(E)	(E)	(E)	(E)	(E)	(E)
37	Buna-N Washer Seal (Gray)	(E)	(E)	(E)	(E)	(E)	(E)
38	Bearing Nipple	200037	200037	200037	200037	200037	200037
39	Friction Collars	200164	200164	200164	200164	200164	200164
40	SAM SPRINKLER HOUSING ASSEMBLY	205679	205679	205679	—	—	—
	Screw, Housing (2)	206650	206650	206650	—	—	—
	Upper Housing Seal	201081	201081	201081	—	—	—
	Lower Housing Seal	201079	201079	201079	—	—	—
	Vent Tube	201158	201158	201158	—	—	—
	Valve Tube	201159	201159	201159	—	—	—
41	Inlet Screen	200006	200006	200006	—	—	—
	VIH-E SOLENOID ASSEMBLY	—	—	—	206920-01	206920-01	206920-01
	Rubber Retainer	—	—	—	627167	627167	627167
	Coil	—	—	—	602118	602118	602118
	U-Frame	—	—	—	210914	210914	210914
	Base Nut	—	—	—	602142	602142	602142
	Tube, Welded	—	—	—	630028	630028	630028
	Plunger/Spring Assembly	—	—	—	629453	629453	629453

(C) Specify nozzle size when ordering.
(D) Included in Bearing Spring Washer Kit # 203731.
(E) Included in Bearing Washer Kit # 203732.

FULL CIRCLE ROTOR

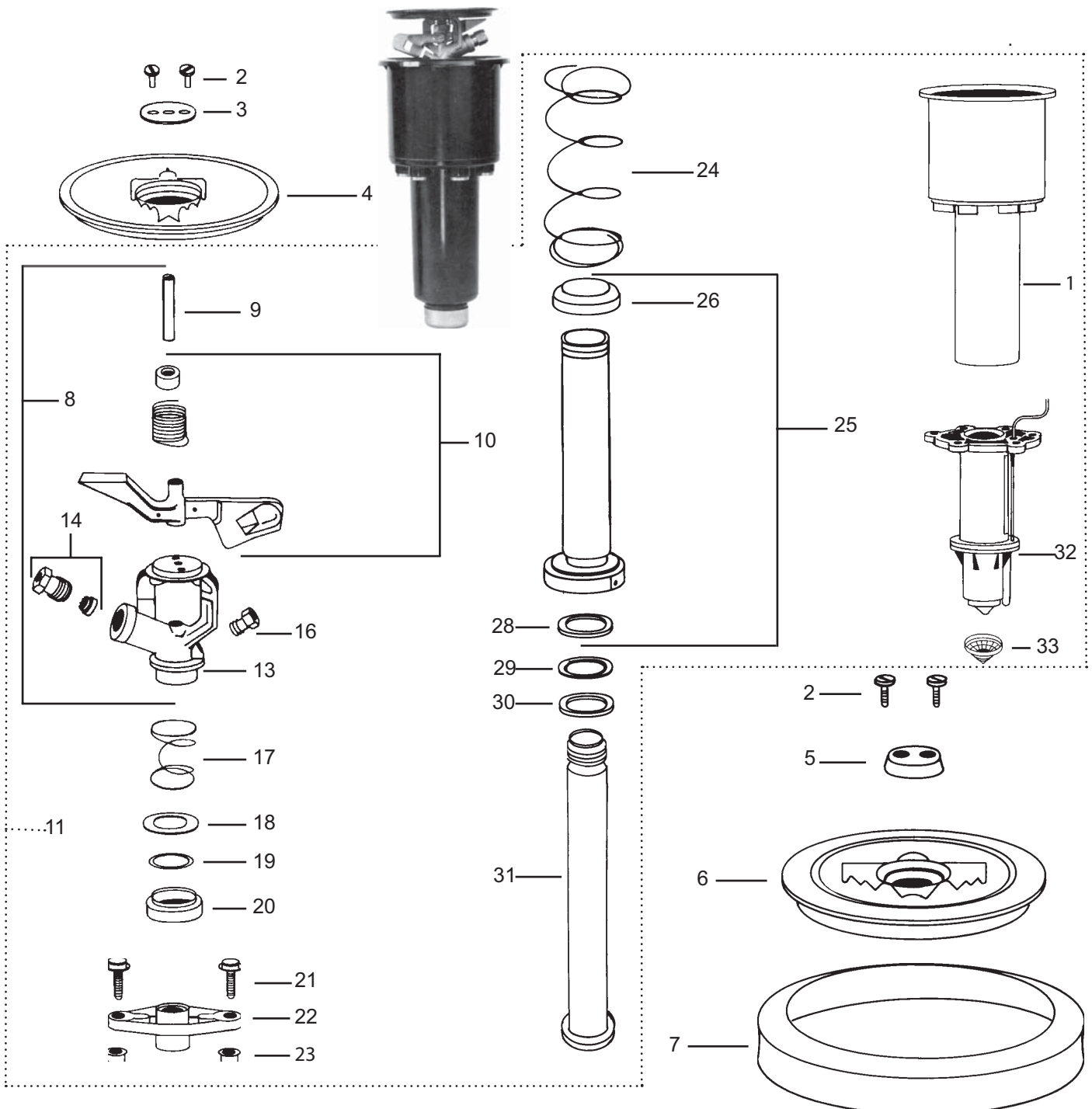
21A / 31A / 41-51A SAM SERIES

21A / 31A / 41-51A-VIH-E SERIES

Ref. No. : 432

Date : 03/2005

Page : 1 of 2





FULL CIRCLE ROTOR

21A / 31A / 41-51A SAM SERIES

21A / 31A / 41-51A-VIH-E SERIES

Ref. No. : 432

Date : 05/2005

Page : 2 of 2

Ref.	Part Description	21ASAM 21ASAM-RC	31ASAM 31ASAM-RC	41-51ASAM 41-51ASAM-RC	21A-VIH-E 21A-VIH-E-RC	31A-VIH-E 31A-VIH-E-RC	41-51A-VIH-E 41-51A-VIH-E-RC
CASES							
1	1" Plastic Case (BSP)	201283-02	201283-02	201283-02	—	—	—
COVER ASSEMBLIES							
2	Cover Screws, Standard	200974	200974	200974	200974	200974	200974
	Cover Screws, Vandal Resistant	200829	200829	200829	200829	200829	200829
3	Retainer, Steel	200740	200740	200740	200740	200740	200740
4	Plastic Cover	208227	208227	208227	208227	208227	208227
5	Retainer, Rubber	200741	200741	200741	200741	200741	200741
6	Rubber Cover	200500	200500	200500	200500	200500	200500
7	Rubber Case Ring	200053	200053	200053	200053	200053	200053
11	INTERNAL ASSEMBLY	—	—	201254-14-11	—	—	201254-14-11
UPPER ASSEMBLY							
8	Arm/Body Assembly	200118-10	200124-14	200132-14-11	200118-10	200124-14	200132-14-11
9	Fulcrum Pin	200025	200025	200076	200025	200025	200076
10	Arm Spring Assembly	203723	203727	203728	203723	203727	203728
13	Body	200026	200026	200101	200026	200026	200101
NOZZLES (B)							
	ADJ Nozzle Assembly	201559	201559	—	201559	201559	—
	Spring	100136	100136	—	100136	100136	—
	Adjustment Pin	100203	100203	—	100203	100203	—
14	Plastic Range Nozzle W/Vane	—	—	211203	—	—	211203
16	Special Drive Nozzle	—	—	201108	—	—	201108
BEARING ASSEMBLY							
17	Bearing Spring	(C)	(C)	(C)	(C)	(C)	(C)
18	Steel Top Seal Washer	(C)	(C)	(C)	(C)	(C)	(C)
19	Teflon Top Seal Washer (White)	(D)	(D)	(D)	(D)	(D)	(D)
20	Buna-N Guide Seal (Black)	(C)	(C)	(C)	(C)	(C)	(C)
21	Guide Screws (Current Self Tapping)	204090	204090	204090	204090	204090	204090
22	Bearing Guide	207416	207416	207416	207416	207416	207416
23	Guide Bushings (Current Style Only)	204308	204308	204308	204308	204308	204308
24	Retract Spring	201113	201113	201113	201113	201113	201113
25	Bearing Sleeve Assembly	202068	202068	202068	202068	202068	202068
26	Buna-N Lower Seal (Black)	(D)	(D)	(D)	(D)	(D)	(D)
28	Wear Ring (Gold)	(D)	(D)	(D)	(D)	(D)	(D)
29	Teflon Speed Washer (White)	(D)	(D)	(D)	(D)	(D)	(D)
30	Buna-N Washer Seal (Gray)	(D)	(D)	(D)	(D)	(D)	(D)
31	Bearing Nipple	200037	200037	200037	200037	200037	200037
32	SAM SPRINKLER HOUSING ASSY	205679	205679	205679	—	—	—
	Screw, Housing (2)	206650	206650	206650	—	—	—
	Upper Housing Seal	201081	201081	201081	—	—	—
	Lower Housing Seal	201079	201079	201079	—	—	—
	Vent Tube	201158	201158	201158	—	—	—
	Valve Tube	201159	201159	201159	—	—	—
33	Inlet Screen	200006	200006	200006	—	—	—
VIH-E SOLENOID ASSEMBLY							
	Rubber Retainer	—	—	—	206920-01	206920-01	206920-01
	Coil	—	—	—	627167	627167	627167
	U-Frame	—	—	—	602118	602118	602118
	Base Nut	—	—	—	210914	210914	210914
	Tube, Welded	—	—	—	602142	602142	602142
	Plunger/Spring Assembly	—	—	—	630028	630028	630028
		—	—	—	629453	629453	629453

- (B) Specify nozzle size when ordering.
- (C) Included in Bearing Spring Washer Kit # 203731.
- (D) Included in Bearing Washer Kit # 203732.

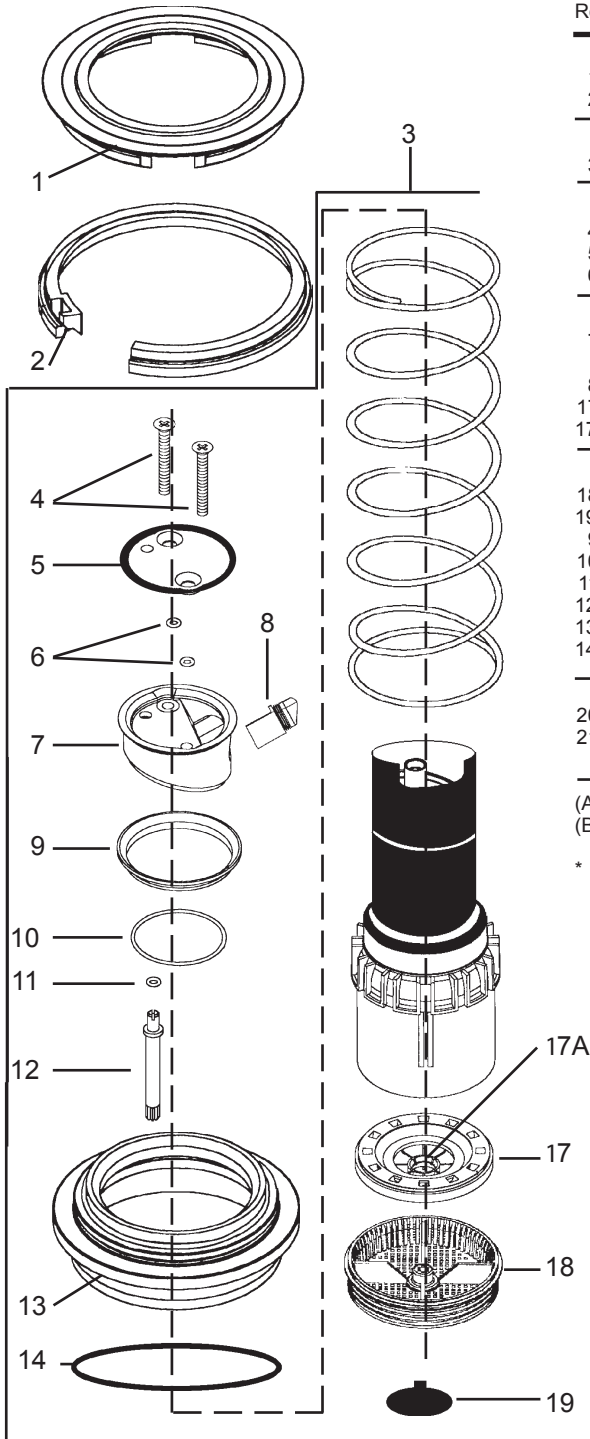
PART CIRCLE ROTOR TALON - TA-85-PC TALON - TA-80-FC



Ref. No.: 443

Date: 03/2005

Page: 1 of 1



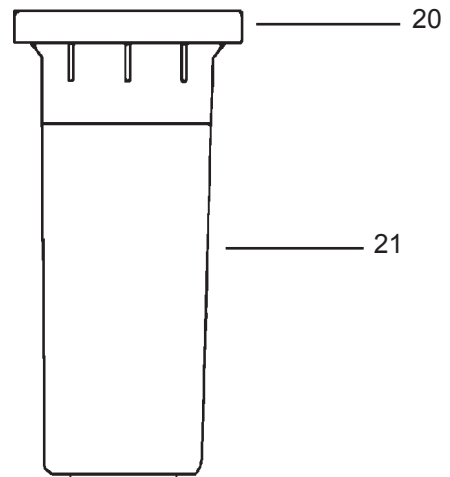
Ref.	Part Description	Qty.	TA-85-PC	TA-80-PC
SNAP RINGS				
1	Cover, Snap Ring - Rubber (A)	1	—	—
2	Snap Ring, Upper	1	211298	211298
INTERNAL ASSEMBLY				
3	Internal Assembly	1	211369-40	211368-40
COVER ASSEMBLY				
4	Screw, # 10 - 24	2	210974	210974
5	Cover, Housing - Rubber (A)	1	—	—
6	O-Ring, Screw # 10	2	211236	211236
NOZZLES				
7	Housing, Nozzle - Black	1	210356-01	210356-02
*	Nozzle/Stator Kit (B)	1	211634-xx	211634-xx
8	Nozzle Assembly, Range	1	—	—
17	Stator	1	—	—
17A	Valve Poppet (not shown)	1	210405	210405
BEARING / RISER-MOTOR ASSEMBLY				
18	Screen	1	210403	210403
19	Stopamatic Assembly	1	211292	211292
9	Seal, Retract	1	210354	210354
10	O-Ring, Nozzle Housing	1	210366	210366
11	O-Ring, Adjusting Stem	1	211236	—
12	Adjustment Stem	1	210420	—
13	Guide, Bearing Assy, STD	1	211147	211147
14	O-Ring, Bearing Guide	1	211242	211242
CASE ASSEMBLIES				
20	Cover, Case - Rubber (A)	1	—	—
21	Case Assembly (BSP)	1	211489-02	211489-02

(A) Included in Rubber Cover Kit # 211367-01.

(B) Specify Nozzle Size when ordering.

Available in # 12, 28, 32, 36, 40, 44, 48.

* Diffuser screw kit: 211927-xx (not available for size #12 nozzle.)



PART/FULL CIRCLE ROTOR

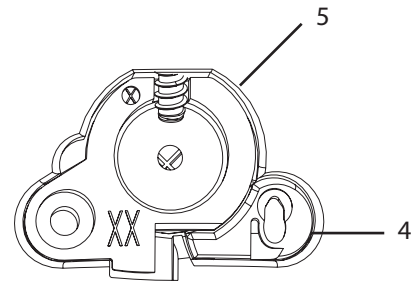
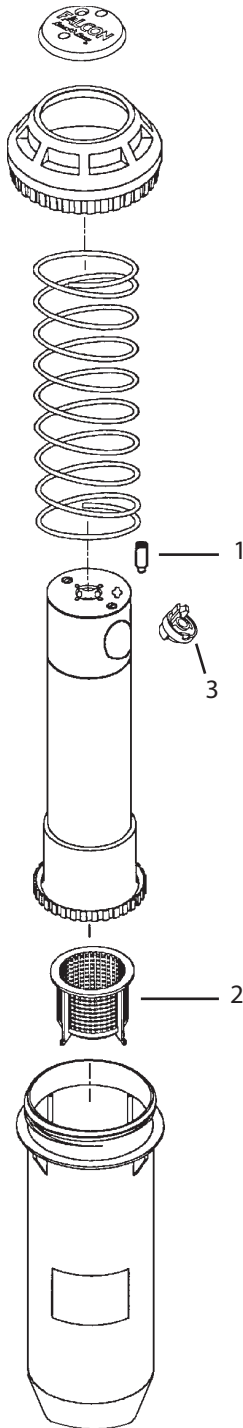
FALCON 6504 ROTOR
All Models



Ref. No. : 440

Date : 05/2005

Page : 1 of 1



Ref. Part Description

F-4-FC / PC

INTERNAL ASSEMBLY

1	Radius Adjustment Screw	208751
2	Filter Screen W/SAM Check Valve	209702

3 NOZZLES

3	Old Syle Nozzles (04 to 18)	B00500-XX
4	Third Port Nozzle	231777
5	New style Nozzles (04, 06, 08, 10, 12, 14, 16, 18)	B81600-XX

FULL CIRCLE ROTOR

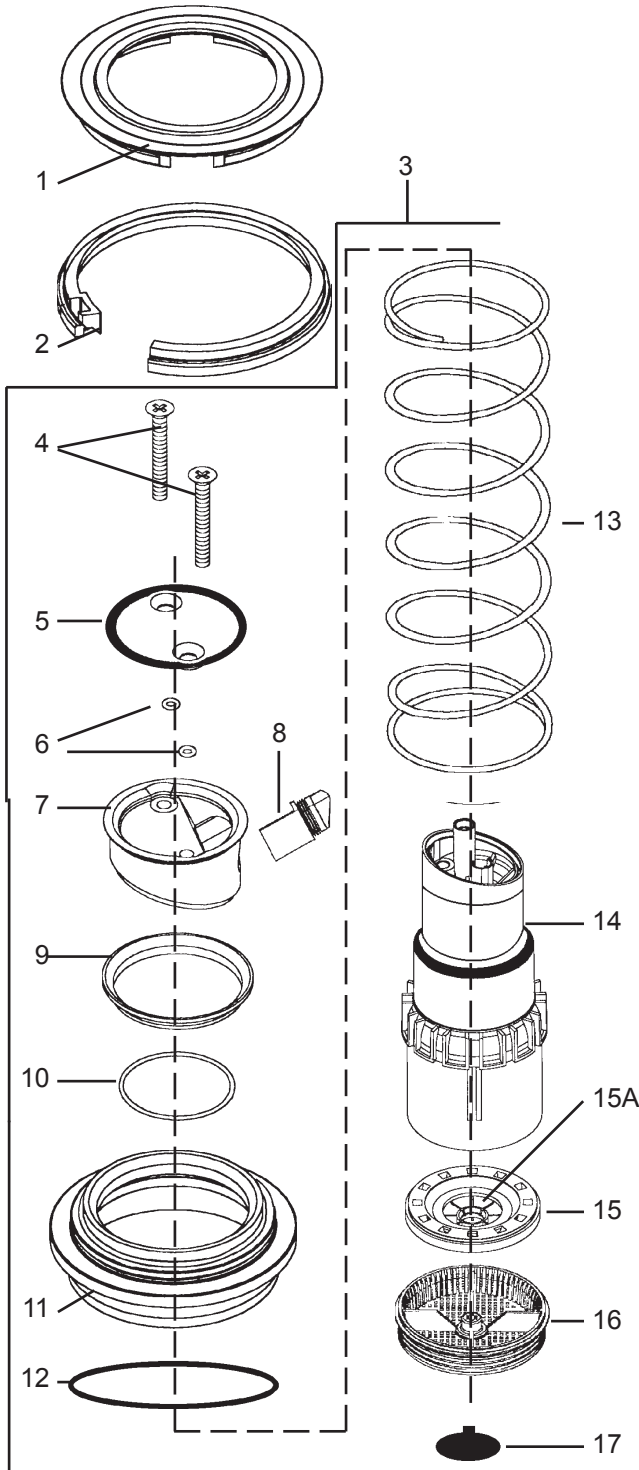
TALON - TA-80-FC



Ref. No. : 442

Date : 02/2005

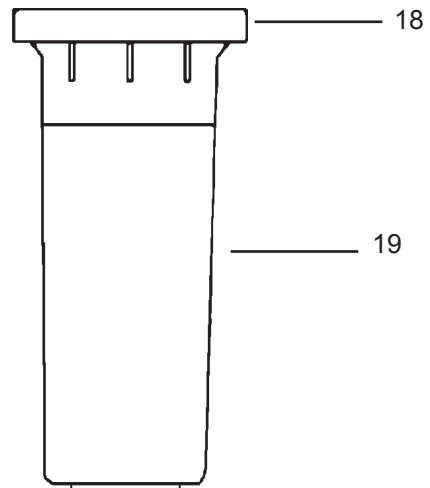
Page : 1 of 1



Ref.	Part Description	Qty.	TA-80-FC
SNAP RINGS			
1	Cover, Snap Ring - Rubber (A)	1	—
2	Snap Ring, Upper	1	211298
INTERNAL ASSEMBLY			
3	Internal Assembly	1	211368-40
COVER ASSEMBLY			
4	Screw, # 10 - 24	2	210974
5	Cover, Housing - Rubber (A)	1	—
6	O-Ring, Screw # 10	2	211236
NOZZLES			
7	Housing, Nozzle - Black	1	210356-02
*	Nozzle/Stator Kit (B)	1	211634-xx
8	Nozzle Assembly, Range	1	—
15	Stator	1	—
15A	Valve Poppet (not shown)	1	210405
BEARING / RISER-MOTOR ASSEMBLY			
9	Seal, Retract	1	—
210354	16	Screen	—
1210403	17	Stopmatic Assembly	—
1211292			
10	O-Ring, Nozzle Housing	1	210366
11	Guide, Bearing Assy, STD	1	—
211147	12	O-Ring, Bearing	—
Guide 1	211242		
13	Spring, Retract	1	—
14	Riser Motor Assembly	1	—
CASE ASSEMBLIES			
18	Cover, Case - Rubber (A)	1	—
19	Case Assembly (BSP)	1	211489-02

(A) Included in Rubber Cover Kit # 211367-01.

(B) Specify Nozzle Size when ordering.
Available in # 12, 28, 32, 36, 40, 44, 48.



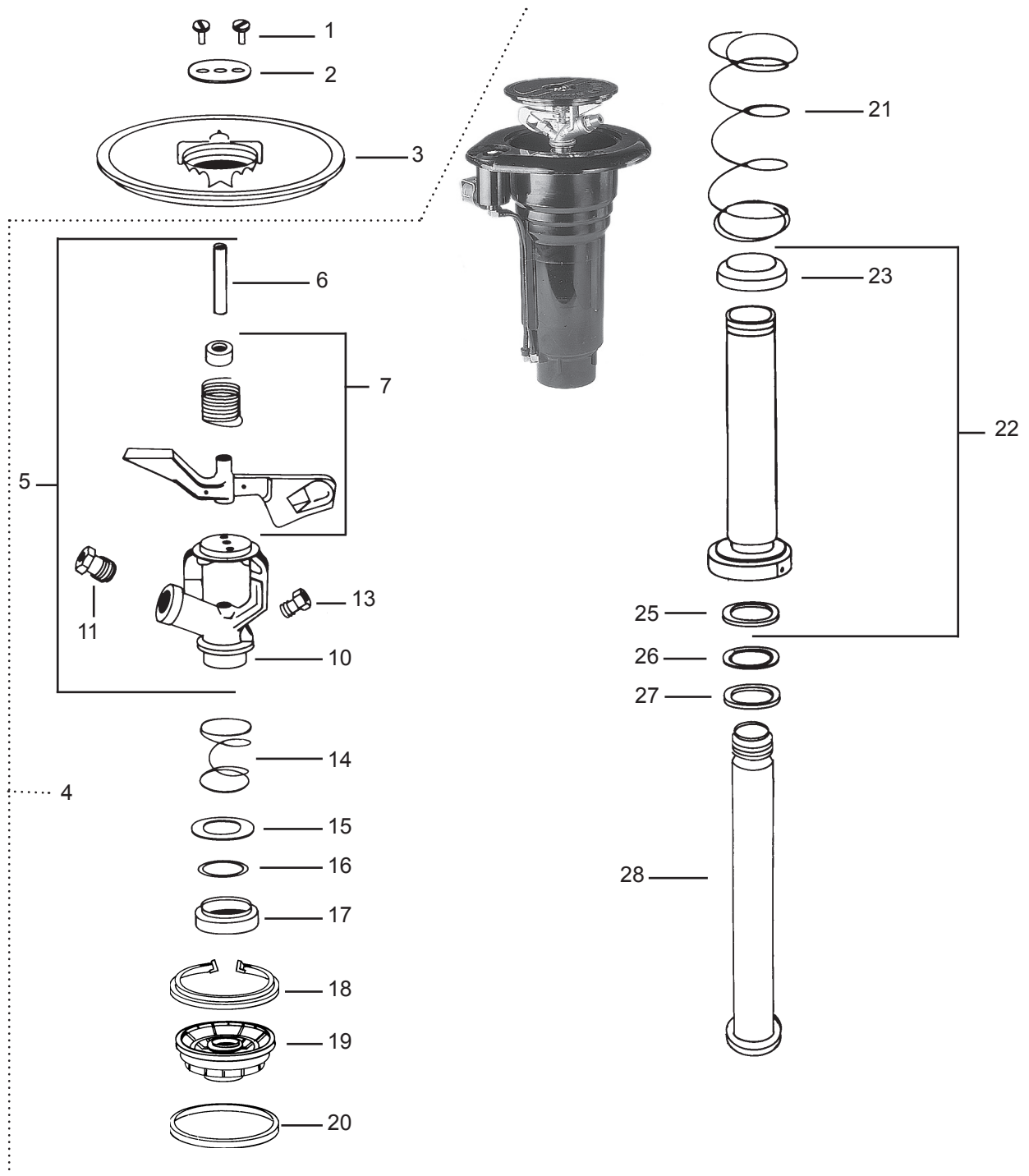
FULL CIRCLE ROTOR

51DR / 51DS

Ref. No. : 451

Date : 03/2005

Page : 1 of 5





FULL CIRCLE ROTOR
51DR / 51DS

Ref. No. : 451

Date : 03/2005

Page : 4 of 5

Ref.	Part Description	51DR	51DS	Ref.	Part Description	51DR	51DS
COVER ASSEMBLY (Page 1)				1 - PIECE CASE ASSEMBLIES (Post 5/93) (Page 2)			
1	Cover Screws, Standard (2)	200974	200974	29	Case Assembly (BSP)	207955-04	208456-02
2	Retainer, Steel	200740	200740	30	PRS/Selector Assembly	210808-03	—
3	Plastic Cover	208227	208227	31	Cover, Threaded (D)	(D)	—
4	INTERNAL ASSEMBLY	204130-20-11.5	204130-20-11.5	32	O-Ring, Stem Cover (D)	(D)	—
UPPER ASSEMBLY				35	PRS Cartridge (D)	(D)	—
5	Arm/Body Assembly	200132-18-11.5	200132-18-11.5	36	Seal, Selector (D)	(D)	—
6	Fulcrum Pin	200076	200076	37	O-Ring, Solenoid Base	211237	—
7	Arm Spring Assembly	203728	203728	38	Base Nut	602606	—
10	Body	200101	200101	39	Plunger Assembly	629453	—
NOZZLES (A)				40	Tube, Welded	630028	—
11	Plastic Range Nozzle*	211203-XX	211203-XX	42	Tubing (2)	205920-02	205920-02
13	Drive Nozzle**	201108-XX	201108-XX	43	Ferrule, Barbed (2)	206409	—
BEARING ASSEMBLY				44	Solenoid Assembly	206920-01	—
14	Bearing Spring	(B)	(B)	38	Base Nut	602606	—
15	Steel Top Seal Washer	(B)	(B)	39	Plunger Assembly	629453	—
16	Teflon Top Seal Washer	(C)	(C)	40	Tube, Welded	630028	—
17	Buna-N Guide Seal (Black)	(B)	(B)	45	Retainer, Rubber	627167	—
18	Upper Snap Ring	208395	208395	46	U-Frame	210914	—
19	Bearing Guide, Plastic	207569	207569	47	Coil	602118	—
	Bearing Guide Ring	207415	207415	48	Snap Ring, Lower (2)	208396	208396
20	Lower Seal	211239	211239	49	HPDV Valve Assembly	211266	212323
21	Retract Spring	201113	201113	64	Probe and O-Ring Assembly	207402	207402
22	Bearing Sleeve Assembly	202068	202068	65	Top Serviceable Rock Screen	211714-02	211714-02
23	Buna-N Lower Seal (Black)	(C)	(C)		HFDV Repair Kit	207594	208439
25	Wear Ring (Gold)	(C)	(C)	62	Inlet Adapter Kit (<6/98)	(E) 207654	(E) 207654
26	Teflon Speed Washer (White)	(C)	(C)	(A) Specify nozzle sizes when ordering.			
27	Buna-N Washer Seal (Gray)	(C)	(C)	(B) Included in Upper Bearing Spring Washer Kit # 203731.			
28	Bearing Nipple	200037	200037	(C) Included in Bearing Washer Kit # 203732.			
				(D) Included in PRS/Selector Repair Kit # 210166.			
				(E) Inlet adapter required on cases made between 5/87 and 6/98. After 6/98 the top serviceable rock screen/valveseat (#65) is included in the 1-piece case.			

* Available in # 13, 14,16, 18, 20, 22, 24

** Available in # 11, 11.5, 13



FULL CIRCLE ROTOR

51DR / 51DS

Ref. No. : 451

Date : 03/2005

Page : 5 of 5

OLD 2 PIECE CASE (PRE 5/93)
 NEW PRS/SELECTOR VALVE WITH ADAPTER (SEE PAGE 3)
 OLD PRS/SELECTOR VALVE PARTS (SEE PAGE 3)

Ref.	Part Description	51DR	51DS	Ref.	Part Description	51DR	51DS
NEW PRS/SELECTOR VALVE ASSEMBLY WITH ADAPTER				2-PIECE CASE PARTS			
29	PRS/Selector Assembly	210808-03	—	48	Lower Snap Rings (2)	208396	208396
31	Cover, Threaded (E)	(E)	—	49	HPDV Valve	211266	212323
32	O-Ring, Stem Cover (E)	(E)	—		HFDV Repair Kit (for stainless steel valve)	207594	208439
35	PRS Cartridge (E)	(E)	—	64	Probe and O-Ring Assembly	207402	207402
36	Seal, Selector (E)	(E)	—	62	Inlet Adapter Kit (D)	207654	207654
37	O-Ring, Solenoid Base	211237	—	43	Ferrule (4-DR,2-DS,1-DH)	206409	206409
38	Base Nut	602606	—				
39	Plunger Assembly	629453	—	(D)	Pre 1988 Cases		
40	Tube, Welded	630028	—	(E)	Included in new style PRS/Selector Repair Kit # 210166.		
42	Tubing (2)	205920-02	205920-02	(F)	Selector Valves made before 6/88 used three (3) O-Rings # 211238.		
43	Ferrule, Barbed (2)	206409	—				
OLD SELECTOR VALVE PARTS (Pre 5/93)							
51	Selector Valve Screws 6-20 (2)	—	—				
	Selector Valve Stem Repair Kit	210069	—				
54	O-Ring (4) (F)	(F)	—				
58	Seal O-Ring	209656	—				
59	Pressure Regulator	208206	—				
37	O-Ring	202882	—				
38	Base Nut	602606	—				
39	Plunger Assembly	629453	—				
40	Tube, Welded	630028	—				
61	Screen	203327	—				
42	Tube (2)	205920-02	205920-02				
SOLENOID ASSEMBLY - ALL CASE TYPES							
44	Solenoid Assembly	206920-01	—				
38	Base Nut	602606	—				
39	Plunger Assembly	629453	—				
40	Tube, Welded	630028	—				
45	Retainer, Rubber	627167	—				
46	U-Frame	210914	—				
47	Coil	602118	—				

FULL CIRCLE ROTOR

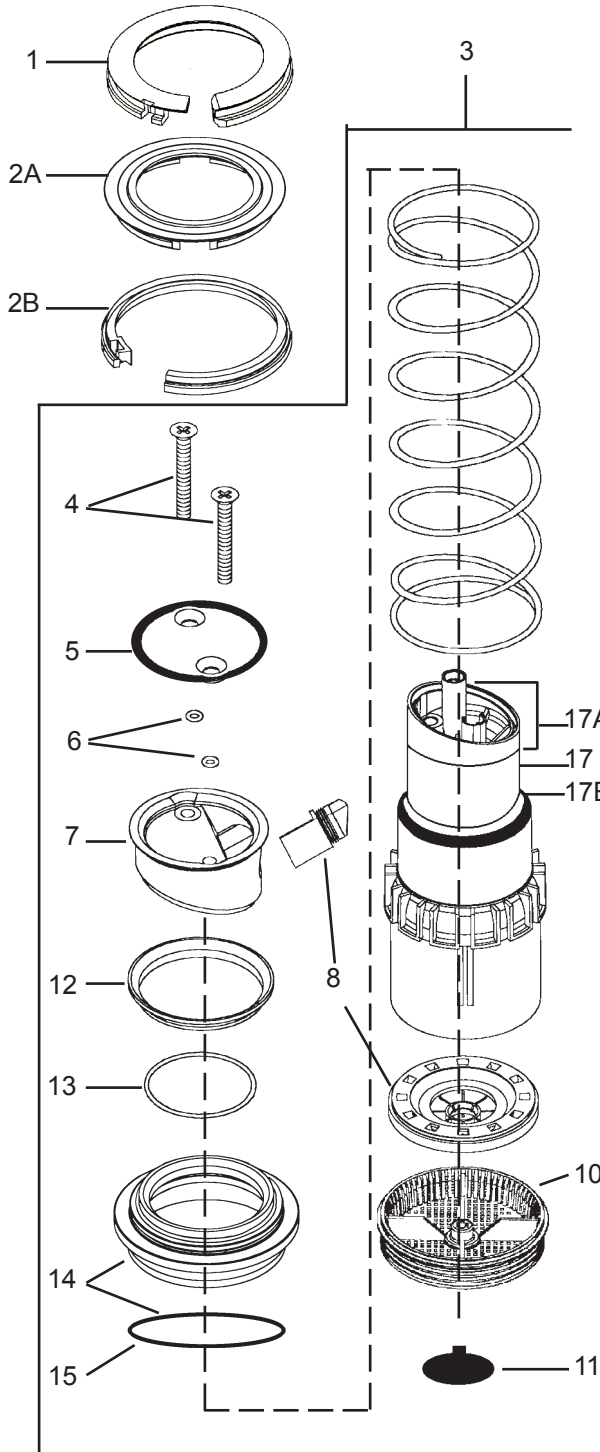
EAGLE - 500 SERIES



Catalog No.: 468

Date: 03/2005

Page: 1 of 2



Ref.	Part Description	Qty.	500-E	500-S	500-H	500-B
SNAP RINGS						
1	Snap Cover	1	211921-01	211921-01	211921-01	211921-01
2A	Cover, Rubber	1	—	—	—	211568
2B	Snap Ring, Upper	1	—	—	—	211298
INTERNAL ASSEMBLY						
3	Internal Assembly	1	211580-53	211910-53	211580-53	211600-53
COVER ASSEMBLY						
4	Screw, 1/4 - 20	2	210974	210974	210974	210974
5	Cover, Housing	1	211282	211282	211282	211282
6	O-Ring, Screw # 10	2	211236	211236	211236	211236
NOZZLES						
7	Housing, Nozzle - Black	1	210356-02	210356-02	210356-02	210356-02
	Nozzle/Stator Kit (A)	1	211585-xx	211585-xx	211585-xx	211585-xx
10	Screen	1	210403	210403	210403	210403
11	SAM Assy	1	—	—	—	211292
BEARING / RISER-MOTOR ASSEMBLY						
12	Seal, Retract (Grey)	1	210354-02	210354-02	210354-02	210354-02
13	O-Ring, Nozzle Housing	1	210366	210366	210366	210366
14	Guide, Bearing Kit, LO-FLOW	1	211263	211263	211263	211263
14	Guide, Bearing Assy, STD	1	211147	—	211147	—
15	O-Ring, Bearing Guide	1	211242	211242	211242	211242
17	Riser Motor Assembly	1	210534	210534	210534	210534
17A	Nozzle Base Replacement Kit w/seals	1	211841	211841	211841	211841
17B	Pop-up Seal	1	210399	210399	210399	210399
CASE ASSEMBLIES						
19*	Rubber Cover Kit	1	211602	211602	211602	211355
20	Case Assembly (BSP)	1212462-02(E)	212464(E)	212463(E)	212463(E)	211489-02
21	PRS/Selector Assy less Coil	1	211418	—	—	—
23	Cap, Selector (F)	1	(F)	—	—	—
24	O-Ring, Stem Cover (F)	1	(F)	—	—	—
26	Selector Washer	1	210040	—	—	—
27	PRS Cartridge (F)	1	(F)	—	—	—
28	Seal, Selector (F)	1	(F)	—	—	—
22	PRS/Housing Kit	1	211386	—	—	—
29	Base Nut	1	602606	—	—	—
31	Tube, Welded	1	630028	—	—	—
	Plunger Assy (Not Shown)	1	629453	—	—	—
32	Tubing	2	205920-02	205920-02	—	—
34	Ferrule	2	206409	—	206409	—
35	Solenoid Assembly	1	206920-01	—	—	—
	Plunger Assy (Not Shown)	1	629453	—	—	—
36	Retainer, Rubber	1	212152	—	—	—
37	U-Frame	1	212124	—	—	—
38	Coil	1	212165	—	—	—
39	Snap Ring, Lower	2	210470	210470	210470	—
40	500/550 Valve Assembly	1	211468	212322	212322	—
42	O-Ring, Probe	2	211238	211238	211238	—
	Seal, Inlet (Not Shown)	1	211177	211177	211177	—
	Filter, Universal (Not Shown)	1	206092-02	—	206092-02	—
43	Screen, Inlet (<3/98)	1	210487	210487	210487	—
44	Top Serviceable Rock Screen	1	211714-01	211714-01	211714-01	—

(A) Specify Nozzle Size when ordering. Available in # 52, 53, 54.

(E) Case Assemblies with Top Serviceable Rock Screens are 1,28 cm longer than Non-Top Serviceable Rock Screen Case Assemblies.

(F) Included in PRS/Selector Repair Kit # 210166. Use 212150 for cases after 5/2001.

* Includes Upper Snap Ring (211298)

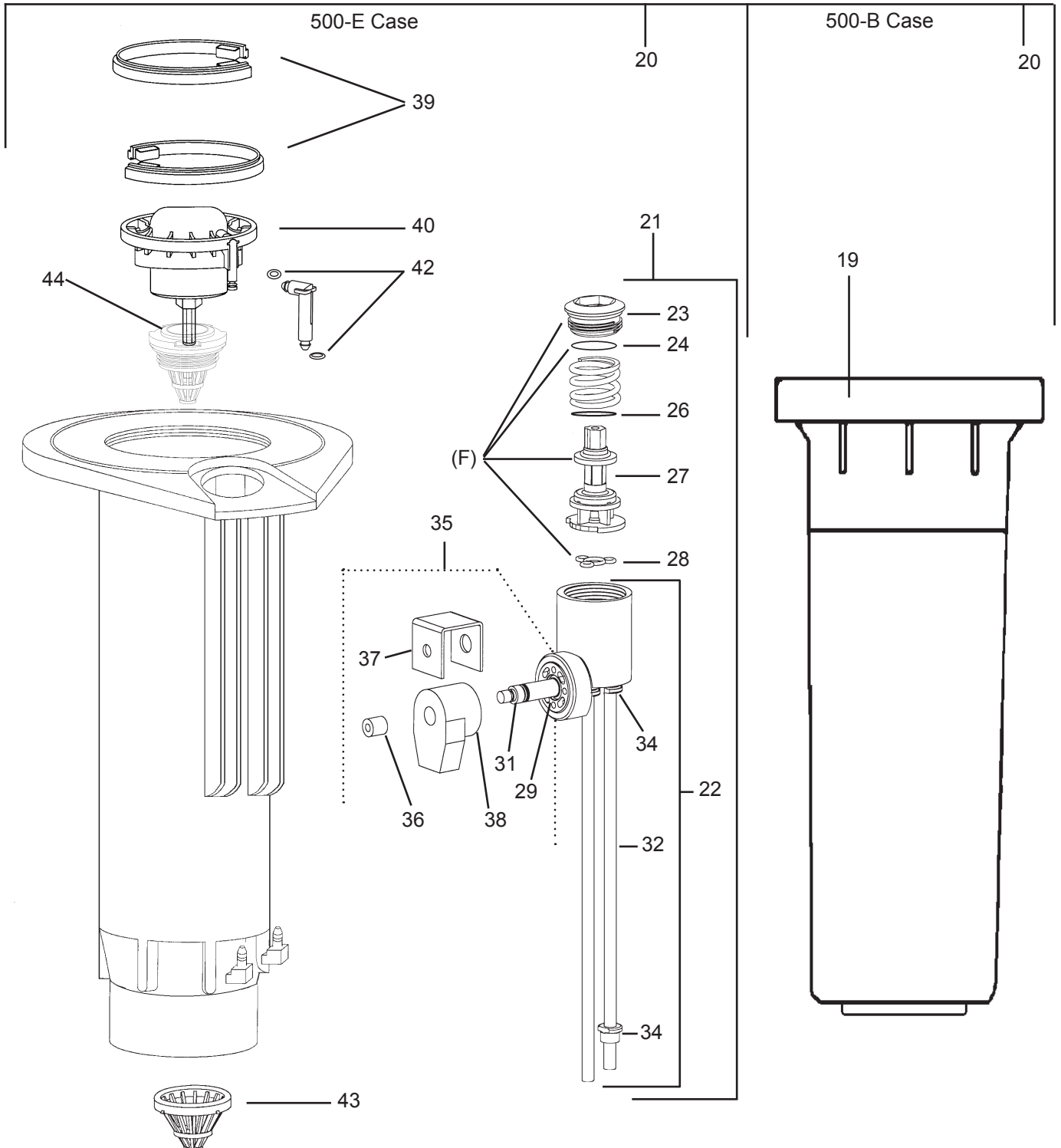
FULL CIRCLE ROTOR

EAGLE - 500 SERIES

Catalog No.: 468

Date: 03/2005

Page: 2 of 2



PART CIRCLE ROTOR

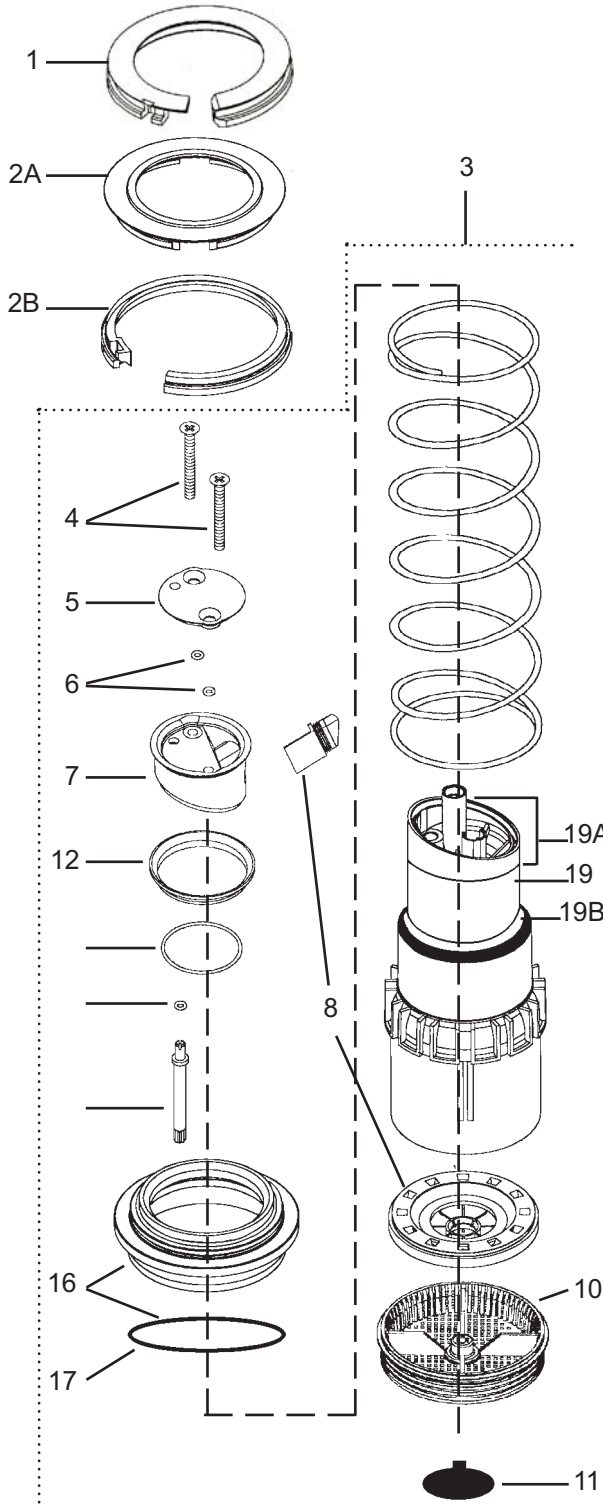
EAGLE - 550 SERIES



Catalog No.: 469

Date: 03/2005

Page: 1 of 2



Ref.	Part Description	Qty.	550-E	550-S	550-H	550-B
SNAP RINGS						
1	Snap Cover	1	211921-01	211921-01	211921-01	211921-01
2A	Cover	1	—	—	—	211568
2B	Upper Snap Ring	1	—	—	—	211298
INTERNAL ASSEMBLY						
3	Internal Assembly	1	211581-53	211911-53	211581-53	211601-53
COVER ASSEMBLY						
4	Screw, 1/4 - 20	2	210974	210974	210974	210974
5	Cover, Housing	1	211281	211281	211281	211281
6	O-Ring, Screw # 10	2	211236	211236	211236	211236
NOZZLES						
7	Housing, Nozzle - Black	1	210356-01	210356-01	210356-01	210356-01
8	Nozzle/Stator Kit (A)	1	211585-xx	211585-xx	211585-xx	211585-xx
10	Screen	1	210403	210403	210403	210403
11	SAM Assy	1	—	—	—	211292
BEARING / RISER-MOTOR ASSEMBLY						
12	Seal, Retract (Grey)	1	210354-02	210354-02	210354-02	210354-02
13	O-Ring, Nozzle Housing	1	210366	210366	210366	210366
14	O-Ring, Adjustment stem	1	211236	211236	211236	211236
15	Adjustment stem	1	210420	210420	210420	210420
16	Guide, Bearing Kit, LO-FLOW	1	211263	211263	211263	211263
16	Guide, Bearing Assy, STD	1	211147	—	211147	—
17	O-Ring, Bearing Guide	1	211242	211242	211242	211242
19	Riser Motor Assembly	1	210535	210535	210535	210535
19A	Nozzle Base Replacement Kit w/Seals	1	211841	211841	211841	211841
19B	Pop-up Seal	1	210399	210399	210399	210399
CASE ASSEMBLIES						
19A20*	Rubber Cover kit	1	211603	211603	211603	211355
21	Case Assembly (BSP)	1212462-02(E)	212464(E)	212463(E)	211489-02	—
23	PRS/Selector Assy less Coil	1	211418	—	—	—
24	Cap, Selector (F)	1	(F)	—	—	—
25	O-Ring, Stem Cover (F)	1	(F)	—	—	—
27	Selector Washer	1	210040	—	—	—
28	PRS Cartridge (F)	1	(F)	—	—	—
29	Seal, Selector (F)	1	(F)	—	—	—
22	PRS/Housing Kit	1	211386	—	—	—
30	Base Nut	1	602606	—	—	—
32	Tube, Welded	1	630028	—	—	—
	Plunger Assy (Not Shown)	1	629453	—	—	—
33	Tubing	2	205920-02	205920-02	—	—
35	Ferrule	2	206409	—	206409	—
36	Solenoid Assembly	1	206920-01	—	—	—
	Plunger Assy (not shown)	1	629453	—	—	—
37	Retainer, Rubber	1	212152	—	—	—
38	U-Frame	1	212124	—	—	—
39	Coil	1	212165	—	—	—
40	Snap Ring, Lower	2	210470	210470	210470	—
41	500/550 Valve Assembly	1	211468	212322	212322	—
43	O-Ring, Probe	2	211238	211238	211238	—
	Seal, Inlet (Not Shown)	1	211177	211177	211177	—
	Filter, Universal (Not Shown)	1	206092-02	—	206092-02	—
44	Screen, Inlet (<3/98)	1	210487	210487	210487	—
45	Top Serviceable RockScreen	1	211714-01	211714-01	211714-01	—

(A) Specify Nozzle Size when ordering. Available in # 52, 53, 54.
 (E) Case Assemblies with Top Serviceable Rock Screens are 1,28 cm longer than Non-Top Serviceable Rock Screen Case Assemblies.
 (F) Included in PRS/Selector Repair Kit # 210166. Use 212150 for cases after 5/2001.
 * Includes Upper Snap Ring (211298)

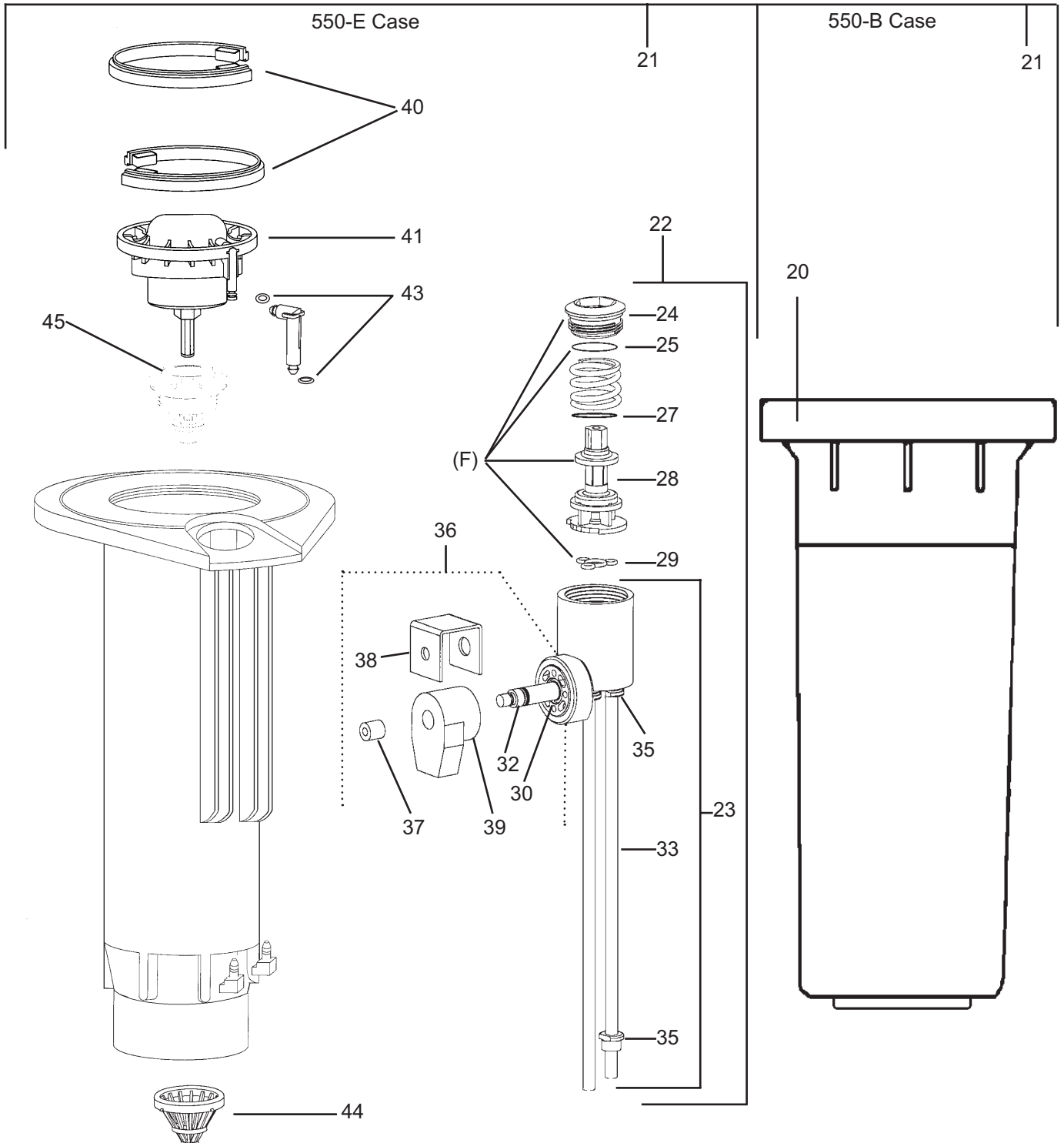
PART CIRCLE ROTOR

EAGLE - 550 SERIES

Catalog No.: 469

Date: 03/2005

Page: 2 of 2



FULL CIRCLE ROTOR

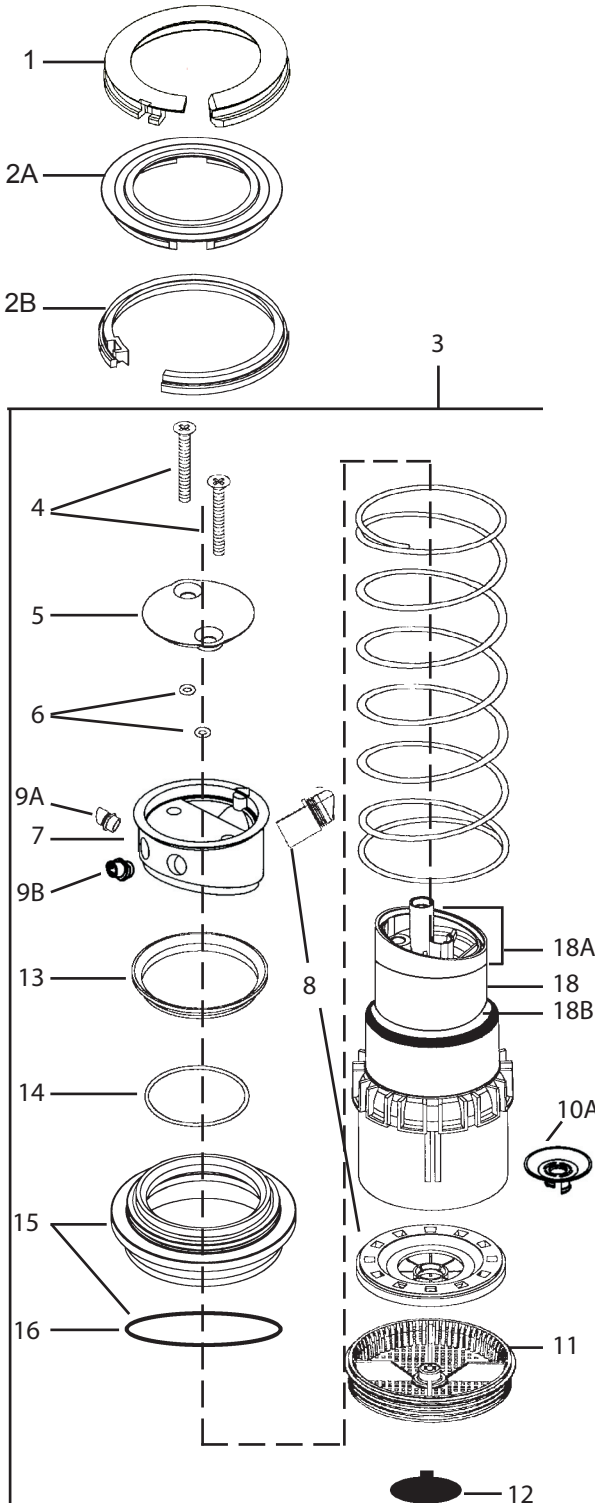
EAGLE - 700 SERIES



Ref. No. : 470

Date : 03/2005

Page : 1 of 2



Ref.	Part Description	Qty.	700-E	700-S	700-H	700B
SNAP RINGS						
1	Snap Cover	1	211921-01	211921-01	211921-01	211921-01
2A	Cover, Rubber	1	—	—	—	211568
2B	Snap Ring, Upper	1	—	—	—	211298
INTERNAL ASSEMBLY						
3	Internal Assembly	1	211435-40	211914-40	211435-40	211454-40
COVER ASSEMBLY						
4	Screw, Self-Tapping 1/4 - 20	2	210974	210974	210974	210974
5	Cover, Housing	1	210252	210252	210252	210252
6	O-Ring, Screw #10	2	211236	211236	211236	211236
NOZZLES						
7	Housing, Nozzle - Black (C)	1	211745-01	211745-01	211745-01	211745-01
8	Nozzle/Stator Kit (Dual) (A)	1	211434-xx	211434-xx	211434-xx	211434-xx
9A	Mid-range Spreader Nozzle	1	See Diagram on p.2			
9B	Close-in Spreader Nozzle	1	See Diagram on p.2			
10A	Poppet	1	210405	210405	210405	210405
11	Screen	1	210403	210403	210403	210403
12	SAM Assy.	1	—	—	—	211292
BEARING / RISER-MOTOR ASSEMBLY						
13	Seal, Retract	1	210354	210354	210354	210354
14	O-Ring, Nozzle Housing	1	210366	210366	210366	210366
15	Guide, Bearing Kit, LO-FLOW	1	—	211263(D)	—	211263(D)
15	Guide, Bearing Assy, STD	1	211147	—	211147	—
16	O-Ring, Bearing Guide	1	211242	211242	211242	211242
18	Riser Motor Assembly	1	210534	210534	210534	210534
18A	Nozzle Base Replacement Kit w/seal	1	211841	211841	211841	211841
211841						
18B	Pop-up Seal (White)	1	210399	210399	210399	210399
CASE ASSEMBLIES						
19	Rubber Cover kit	1	211602	211602	211602	—
20	Case Assembly (BSP)	1	212462-02(F)	212464(F)	212463(F)	211489-02
21	PRS/Selector Assy(>6/95)-2 tubes	1	211418	—	—	—
23	Cap, Selector (G)	1	(G)	—	—	—
24	O-Ring, Stem Cover (G)	1	(G)	—	—	—
26	Selector Washer	1	210040	—	—	—
27	PRS Cartridge (G)	1	(G)	—	—	—
28	Seal, Selector (G)	1	(G)	—	—	—
22	PRS/Housing Kit	1	211386	—	—	—
29	Base Nut	1	602606	—	—	—
31	Tube, Welded	1	630028	—	—	—
	Plunger Assy (Not Shown)	1	629453	—	—	—
32	Tubing	2	205920-02	205920-02	—	—
34	Ferrule	2	206409	—	206409	—
35	Solenoid Assembly	1	206920-01	—	—	—
	Plunger Assy (not shown)	1	629453	—	—	—
36	Retainer, Rubber	1	212152	—	—	—
37	U-Frame	1	212124	—	—	—
38	Coil	1	212165	—	—	—
39	Snap Ring, Lower	2	210470	210470	210470	—
40	700/750 Valve Assembly	1	211468	212322	212322	—
42	O-Ring, Probe	2	211238	211238	211238	—
	Seal, Inlet (Not Shown)	1	211177	211177	211177	—
	Filter, Universal (Not Shown)	1	206092-02	—	206092-02	—
43	Screen, Inlet (<3/98)	1	210487	210487	210487	—
44	Top Serviceable RockScreen	1	211714-01	211714-01	211714-01	—

(A) Specify Nozzle Size when ordering. Available in # 28, 32, 36, 40, 44, 48.

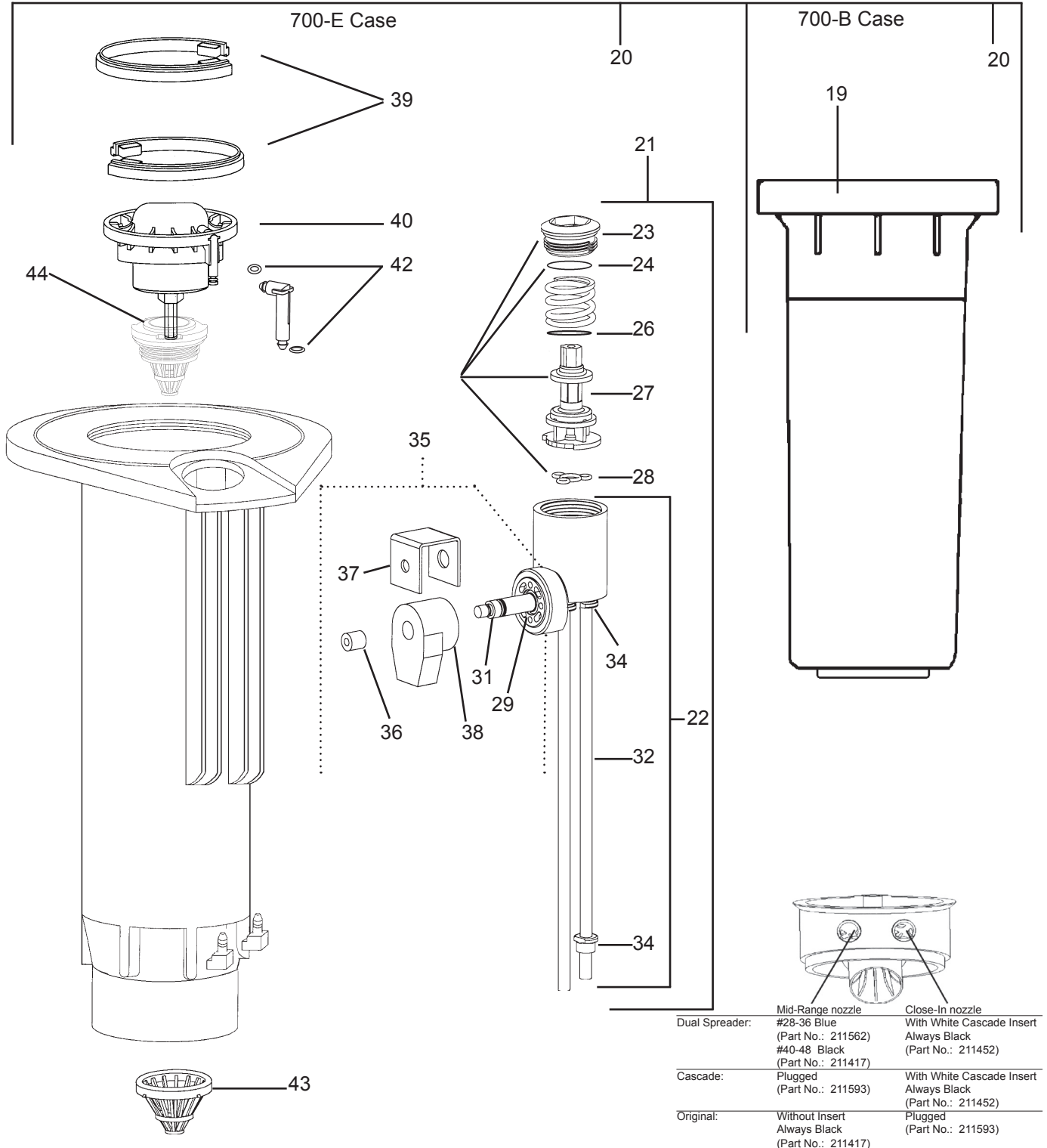
FULL CIRCLE ROTOR

EAGLE - 700 SERIES

Ref. No. : 470

Date : 03/2005

Page : 2 of 2



PART CIRCLE ROTOR

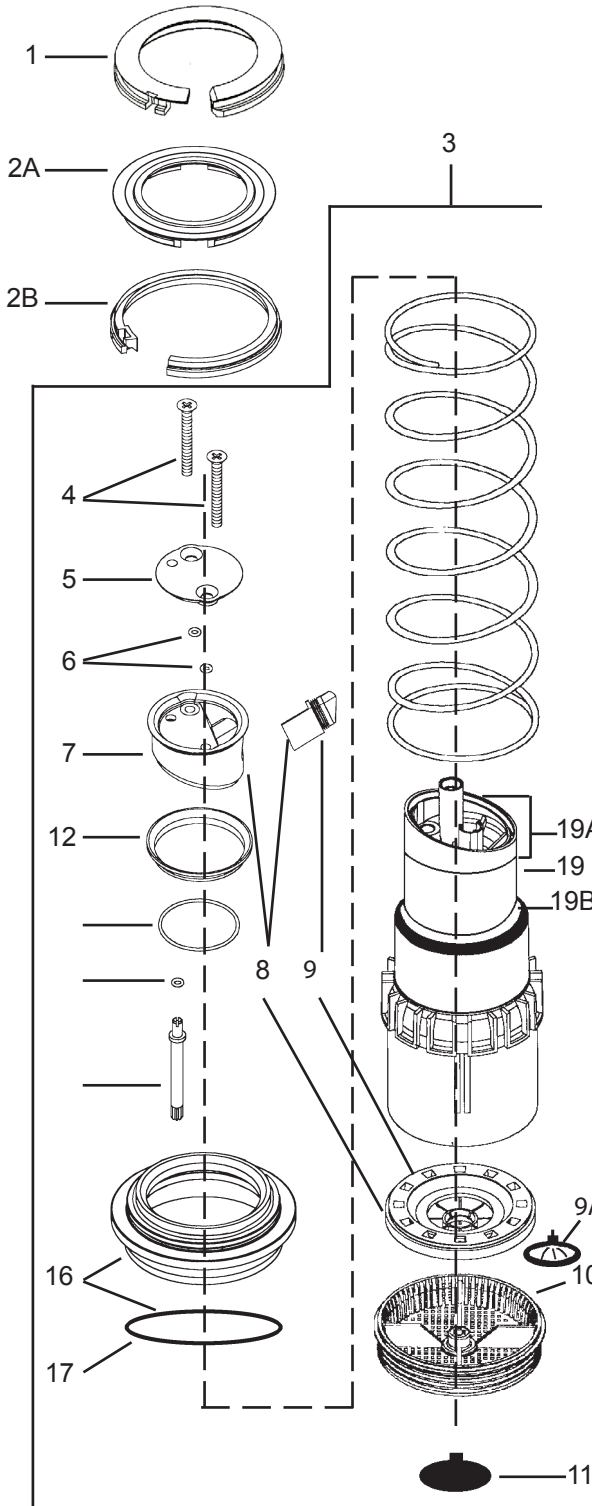
EAGLE - 750 SERIES



Ref. No. : 475

Date : 03/2005

Page : 1 of 2



Ref.	Part Description	Qty.	750-E	750-S	750-H	750B
SNAP RINGS						
1	Snap Cover	1	211921-01	211921-01	211921-01	211921-01
2A	Cover, Rubber	1	—	—	—	211568
2B	Snap Ring, Upper	1	—	—	—	211298
INTERNAL ASSEMBLY						
3	Internal Assembly	1	211544-40	211915-40	211544-40	211543-40
COVER ASSEMBLY						
4	Screw, Self Tapping 1/4 - 20	2	210974	210974	210974	210974
5	Cover, Housing	1	210355	210355	210355	210355
6	O-Ring, Screw	2	211236	211236	211236	211236
NOZZLES (See Footnotes and P. 2)						
8	Housing, Dual-Spreader Nozzle (A) (Upgrade Cascade to Dual-Spreader)	1	212203-xx	212203-xx	212203-xx	212203-xx
7	Housing, Cascade Nozzle	1	211982-01	211982-01	211982-01	211982-01
9	Nozzle/Stator Kit - Dual-Spreader (A)	1	212301-xx	212301-xx	212301-xx	212301-xx
9	Nozzle/Stator Kit,#24 (Cascade)	1	211431-24	211431-24	211431-24	211431-24
9	Nozzle/Stator Kit (Cascade)	1	211545-xx	211545-xx	211545-xx	211545-xx
9A	Poppet	1	210405	210405	210405	210405
10	Screen	1	210403	210403	210403	210403
11	SAM Assy	1	—	—	—	211292
BEARING / RISER-MOTOR ASSEMBLY						
12	Seal, Retract	1	210354	210354	210354	210354
13	O-Ring, Nozzle Housing	1	210366	210366	210366	210366
14	O-Ring, Adjustment Stem	1	211236	211236	211236	211236
15	Adjustment Stem	1	210420	210420	210420	210420
16	Guide, Bearing Kit, LO-FLOW	1	—	211263	—	211263
16	Guide, Bearing Assy, STD	1	211147	—	211147	—
17	O-Ring, Bearing Guide	1	211242	211242	211242	211242
19	Riser Motor Assembly	1	210535	210535	210535	210535
19A	Nozzle Base Replacement Kit w/seal	1	211841	211841	211841	211841
19B	Pop-up Seal (White)	1	210399	210399	210399	210399
CASE ASSEMBLIES						
20	Rubber Cover Kit	1	211603	211603	211603	211355
21	Case Assembly (BSP)	1	212462-02(E)	212464(E)	212463(E)	211489-02
22	PRS/Selector Assy (>6/95)-2 Tubes	1	211418	—	—	—
24	Cap, Selector (F)	1	(F)	—	—	—
25	O-Ring, Stem Cover (F)	1	(F)	—	—	—
27	Selector Washer	1	210040	—	—	—
28	PRS Cartridge (F)	1	(F)	—	—	—
29	Seal, Selector (F)	1	(F)	—	—	—
23	PRS/Housing Kit (>6/95)	1	211386	—	—	—
30	Base Nut	1	602606	—	—	—
32	Tube, Welded	1	630028	—	—	—
	Plunger Assy (Not Shown)	1	629453	—	—	—
33	Tubing	2	205920-02	205920-02	—	—
35	Ferrule	2	206409	—	206409	—
36	Solenoid Assembly	1	206920-01	—	—	—
	Plunger Assy (not shown)	1	629453	—	—	—
37	Retainer, Rubber	1	212152	—	—	—
38	U-Frame	1	212124	—	—	—
39	Coil	1	212165	—	—	—
40	Snap Ring, Lower	2	210470	210470	210470	—
41	700/750 Valve Assembly	1	211468	212322	212322	—
43	O-Ring, Probe	2	211238	211238	211238	—
	Seal, Inlet (Not Shown)	1	211177	211177	211177	—
	Filter, Universal (Not Shown)	1	206092-02	—	206092-02	—
44	Screen, Inlet (<3/98)	1	210487	210487	210487	—
45	Top Serviceable RockScreen	1	211714-01	211714-01	211714-01	—

(A) Specify Nozzle Size when ordering: 28, 32, 36, 40, 44, 48.

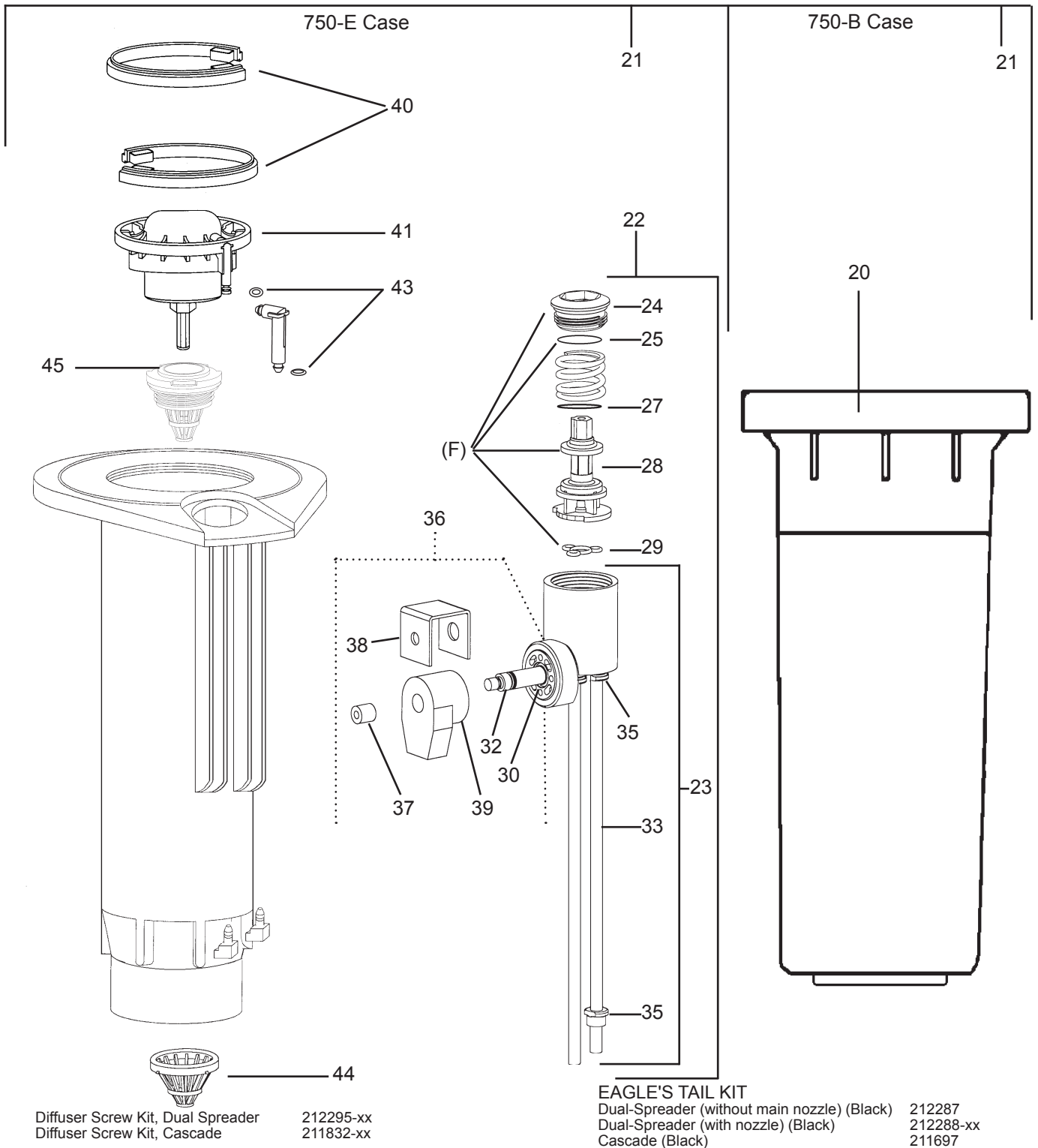
PART CIRCLE ROTOR

EAGLE - 750 SERIES

Ref. No. : 475

Date : 03/2005

Page : 2 of 2

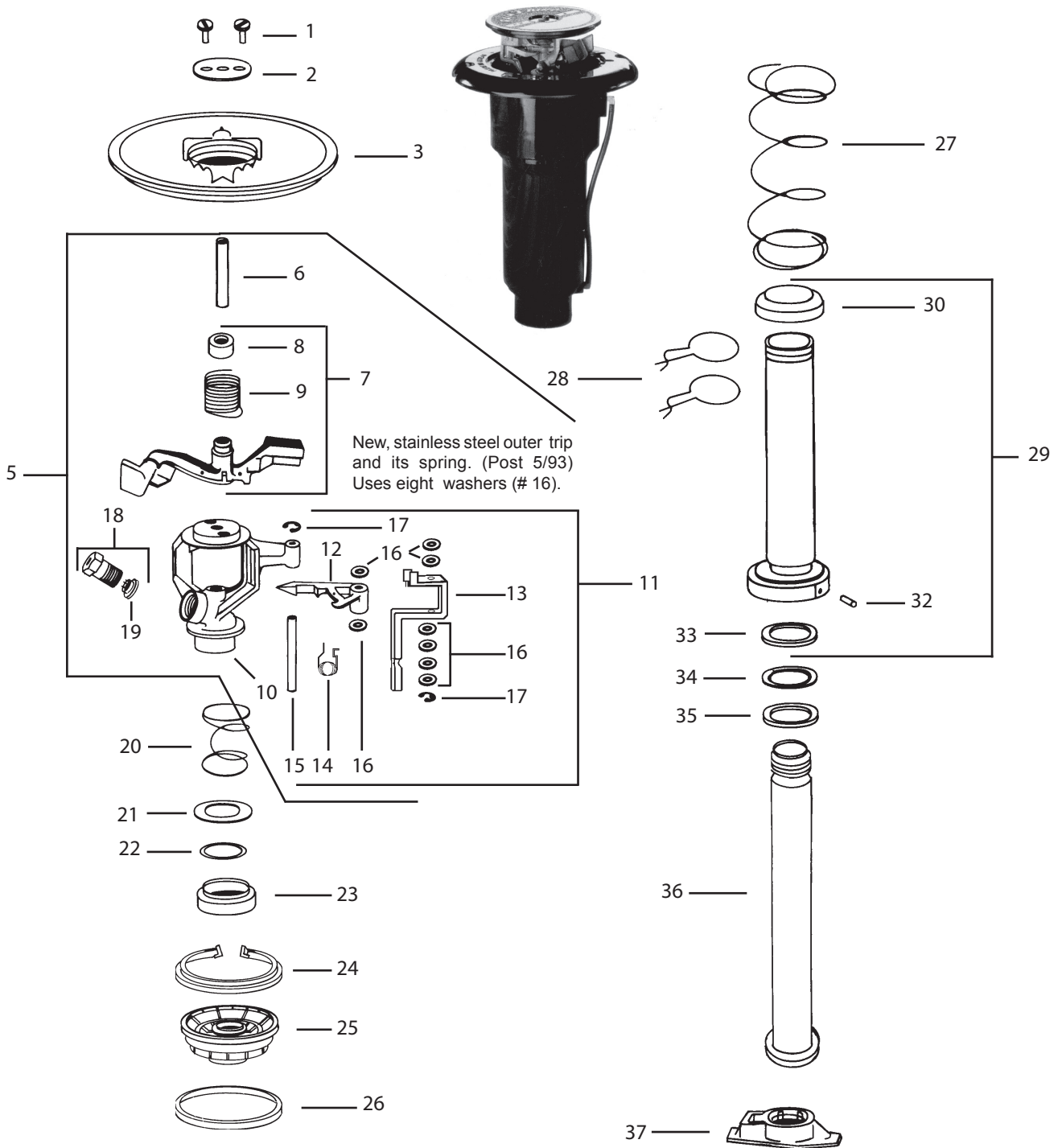


PART CIRCLE ROTOR
47DR / 47DS

Ref. No. : 447

Date : 03/2005

Page : 1 of 5



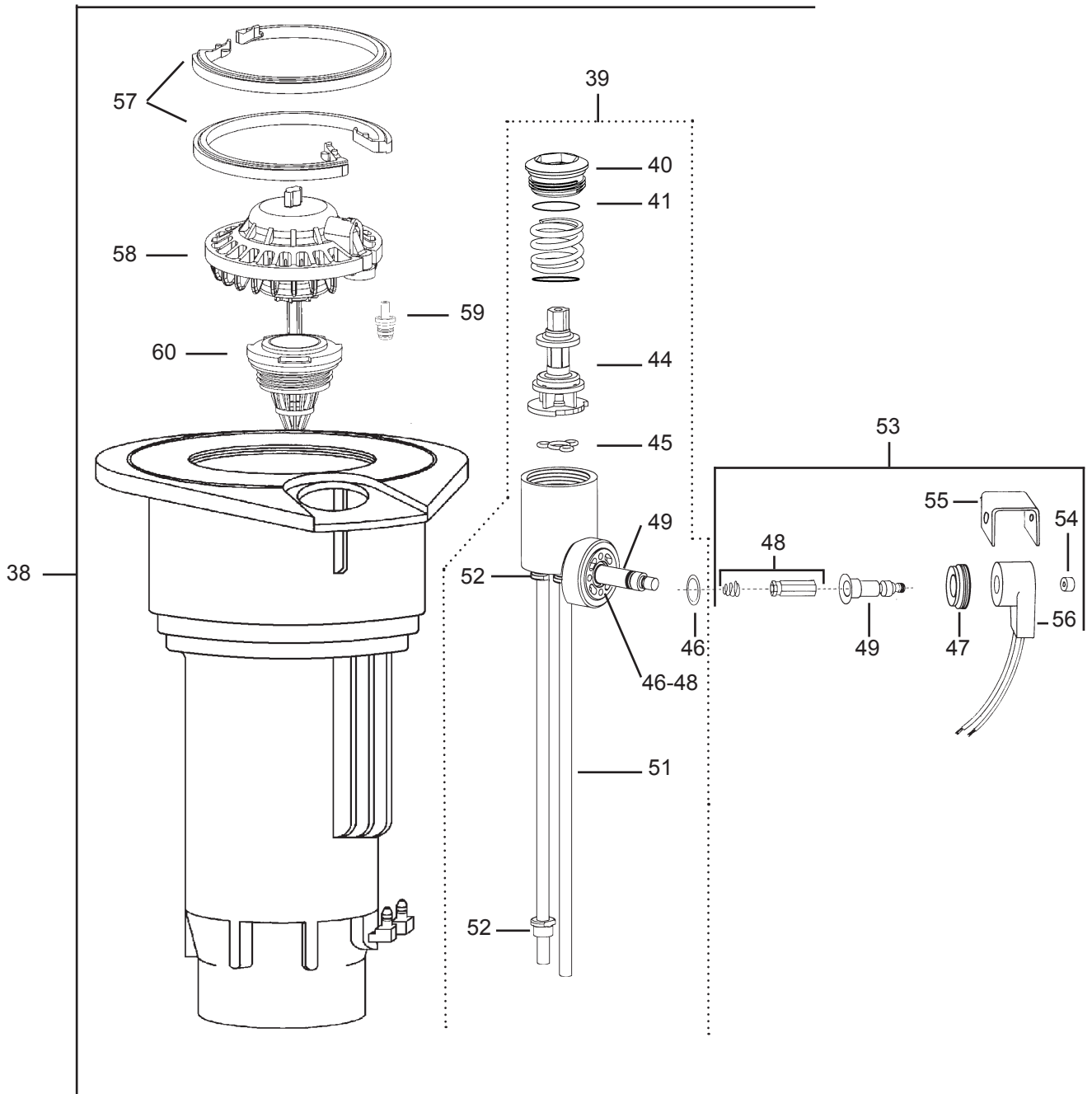
PART CIRCLE ROTOR
47DR / 47DS

Ref. No. : 447

Date : 03/2005

Page : 2 of 5

1 - PIECE CASE ASSEMBLY (POST 5/93) (SEE PAGE 4)



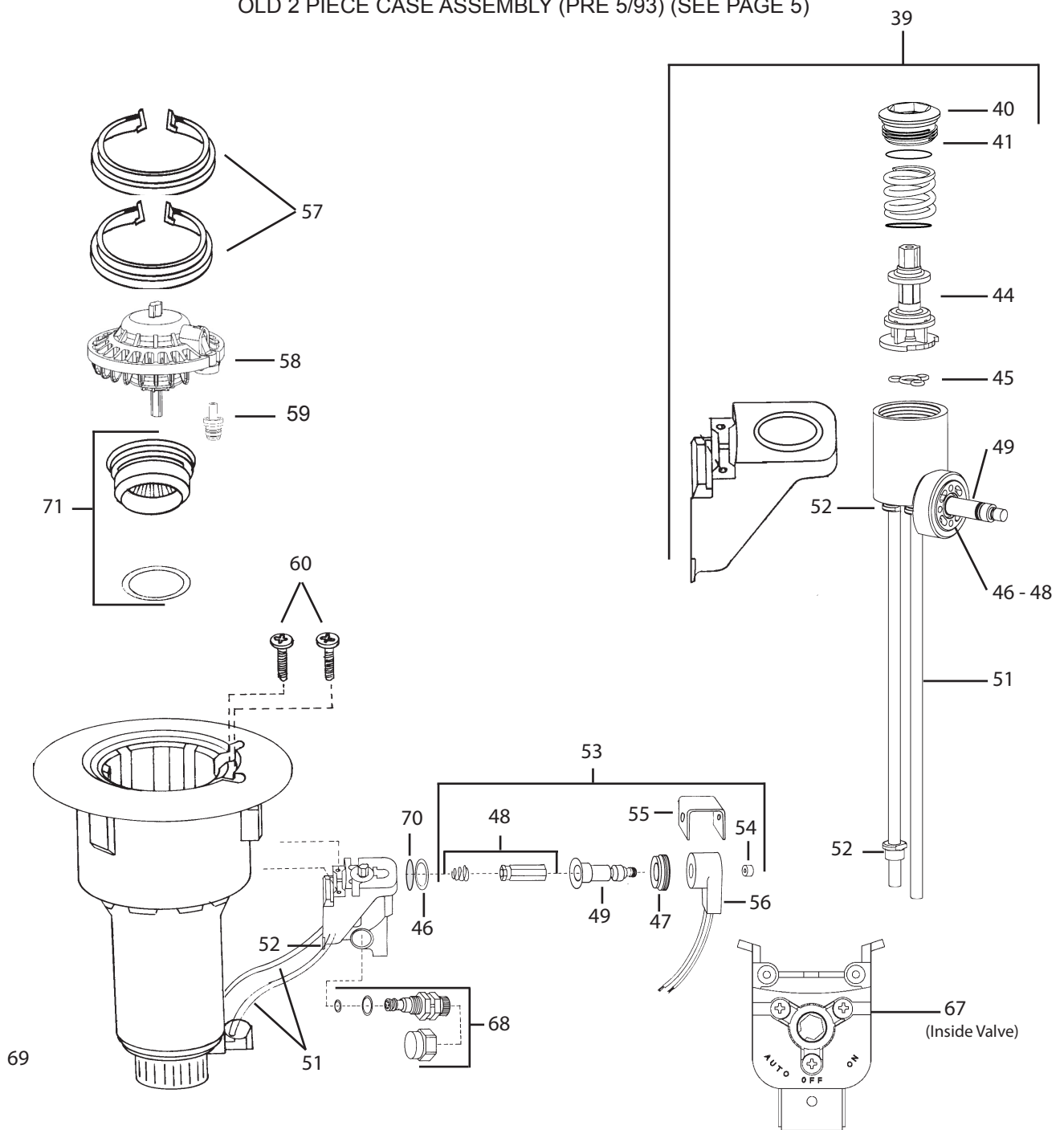
PART CIRCLE ROTOR
47DR / 47DS

Ref. No. : 447

Date : 03/2005

Page : 3 of 5

OLD 2 PIECE CASE ASSEMBLY (PRE 5/93) (SEE PAGE 5)





PART CIRCLE ROTOR
47DR / 47DS

Ref. No. : 447

Date : 03/2005

Page : 4 of 5

Ref.	Part Description	47DR	47DS
COVER ASSEMBLY (Page 1)			
1	Cover Screws, Standard (2)	200974	200974
2	Retainer, Steel	200740	200740
3	Plastic Cover	208227	208227
<hr/>			
	*INTERNAL ASSEMBLY	204113-16	204113-16
<hr/>			
UPPER ASSEMBLY			
5	Arm/Body Assembly	200130-16	200130-16
6	Fulcrum Pin	200076	200076
7	Arm Spring Assembly	203725	203725
8	Arm Hood	—	—
9	Arm Spring	—	—
10	Body	200092	200092
<hr/>			
TRIP MECHANISM			
11	Trip Repair Kit	203719	203719
12	Inner Trip	200060	200060
13	Outer Trip	—	—
14	Trip Spring	209363	209363
15	Trip Shaft	201932	201932
16	Spacer Washers (8)	201933	201933
17	E-Ring (2)	200975	200975
<hr/>			
NOZZLES (C)			
18	Range Nozzle Assembly	200079-XX	200079-XX
19	Vane	202143	202143
<hr/>			
BEARING ASSEMBLY			
20	Bearing Spring	(D)	(D)
21	Steel Top Seal Washer	(D)	(D)
22	Teflon Top Seal Washer	(E)	(E)
23	Buna-N Guide Seal (Black)	(D)	(D)
24	Upper Snap Ring	208395	208395
25	Bearing Guide, Plastic	207569	207569
	Bearing Guide Ring	207415	207415
26	Lower Seal	211239	211239
27	Retract Spring	201113	201113
28	Friction Collars (2)	200164	200164
29	Bearing Sleeve Assembly	202068	202068
30	Buna-N Lower Seal (Black)	(E)	(E)
32	Bearing Sleeve Pin	200064	200064
33	Wear Ring (Gold)	(E)	(E)
34	Teflon Speed Washer (White)	(E)	(E)
35	Buna-N Washer Seal (Gray)	(E)	(E)
36	Bearing Nipple	200037	200037
37	Part Circle Adapter	203936	203936

* Includes #5 to #37

Ref.	Part Description	47DR	47DS
1 - PIECE CASE ASSEMBLIES (Page 3)			
38	Case Assembly (BSP)	207955-04	208456-02
39	PRS/Selector Assembly	210808-03	—
40	Cover, Threaded (F)	(F)	—
41	O-Ring, Stem Cover (F)	(F)	—
44	PRS Cartridge (F)	(F)	—
45	Seal, Selector (F)	(F)	—
46	O-Ring, Solenoid Base	211237	—
47	Base Nut	602606	—
48	Plunger Assembly	629453	—
49	Tube, Welded	630028	—
51	Tubing (2)	205920-02	205920-02
52	Ferrule, Barbed (2)	206409	—
53	Solenoid Assembly	206920-01	—
47	Base Nut	602606	—
48	Plunger Assembly	629453	—
49	Tube, Welded	630028	—
54	Retainer, Rubber	627167	—
55	U-Frame	210914	—
56	Coil	602118	—
57	Snap Ring, Lower (2)	208396	208396
58	HPDV Valve Assembly	211266	212323
59	Probe and O-Ring Assembly	207402	207402
60	Top Serviceable Rock Screen	211714-02	211714-02
	HFDV Repair Kit	207594	208439
71	Inlet Adapter Kit (<6/98)	(G) 207654	(G) 207654

(C) Specify nozzle sizes when ordering : Available in # 14, 15, 16

(D) Included in Upper Bearing Spring Washer Kit # 203731.

(E) Included in Bearing Washer Kit # 203732.

(F) Included in PRS/Selector Repair Kit # 210166.

(G) Inlet adapter required on cases made between 5/87 and 6/98. After 6/98 the top serviceable rock screen/ valve seat (#60) is included in the 1-piece case.



PART CIRCLE ROTOR
47DR / 47DS

Ref. No. : 447

Date : 03/2005

Page : 5 of 5

OLD 2 PIECE CASE (PRE 5/93)
NEW PRS/SELECTOR VALVE WITH ADAPTER (SEE PAGE 5)
OLD PRS/SELECTOR VALVE PARTS (SEE PAGE 5)

Ref.	Part Description	47DR	47DS	Ref.	Part Description	47DR	47DS
NEW PRS/SELECTOR VALVE ASSEMBLY WITH ADAPTER				2-PIECE CASE PARTS			
39	PRS/Selector Assembly	210808-03	—	57	Lower Snap Rings (2)	208396	208396
40	Cover, Threaded (G)	(G)	—	58	HPDV Valve	211266	212323
41	O-Ring, Stem Cover (G)	(G)	—		HFDV Repair Kit	207594	208439
44	PRS Cartridge (G)	(G)	—	59	Probe and O-Ring Assembly	207402	207402
45	Seal, Selector (G)	(G)	—	71	Inlet Adapter (I)	(I) 207654	(I) 207654
46	O-Ring, Solenoid Base	211237	—	52	Ferrule (4-DR,2-DS)	206409	206409
47	Base Nut	602606	—				
48	Plunger Assembly	629453	—				
49	Tube, Welded	630028	—	(G)	Included in new style PRS/Selector Repair Kit # 210166.		
51	Tubing (2)	205920-02	205920-02	(H)	Selector Valves made before 6/88 used three (3) O-Rings # 211238.		
52	Ferrule, Barbed (2)	206409	—	(I)	Pre 1998 cases		
OLD SELECTOR VALVE PARTS (Pre 5/93)							
60	Selector Valve Screws (2)	—	—				
	Selector Valve Stem Repair Kit	210069	—				
63	O-Ring (4)	(H)	—				
67	Seal O-Ring	209656	—				
68	Pressure Regulator	208206	—				
46	O-Ring	202882	—				
47	Base Nut	602606	—				
48	Plunger Assembly	629453	—				
49	Tube, Welded	630028	—				
70	Screen	203327	—				
51	Tubing (2)	205920-02	205920-02				
SOLENOID ASSEMBLY - ALL CASE TYPES							
53	Solenoid Assembly	206920-01	—				
47	Base Nut	602606	—				
48	Plunger Assembly	629453	—				
49	Tube, Welded	630028	—				
54	Retainer, Rubber	627167	—				
55	U-Frame	210914	—				
56	Coil	602118	—				

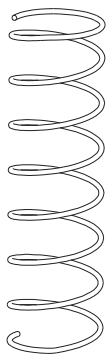
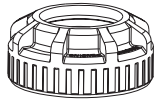
PART / FULL CIRCLE ROTOR

7005 / 8005 SERIES
ALL MODELS

Ref. No. : 477

Date : 03/2005

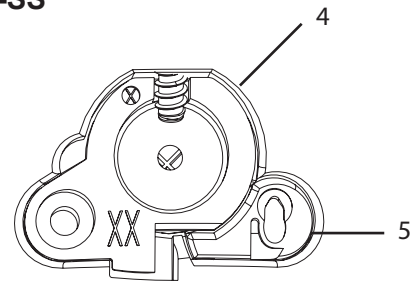
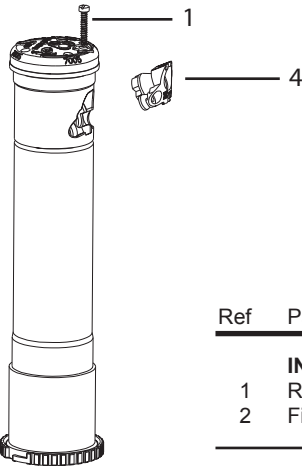
Page : 1 of 1



7005 / 7005-SS



8005 / 8005-SS



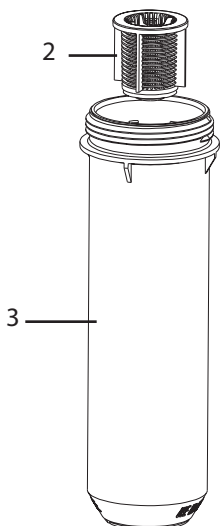
RAIN CURTAIN™ NOZZLES

Ref	Part Description	8005 7005
INTERNAL ASSEMBLY		
1	Radius Adjustment Screw	250126
2	Filter Screen -w/SAM	250127
CASE		
3	Case - BSP	250128-02
NOZZLES		
4	Nozzle (A)	B81600-XX
5	Third Port Nozzle	231777

(A) Consult current whole goods price list

Sizes for 7005 : 04, 06, 08, 10, 12, 14, 16, 18

Sizes for 8005 : 12, 14, 16, 18, 20, 22, 24, 26



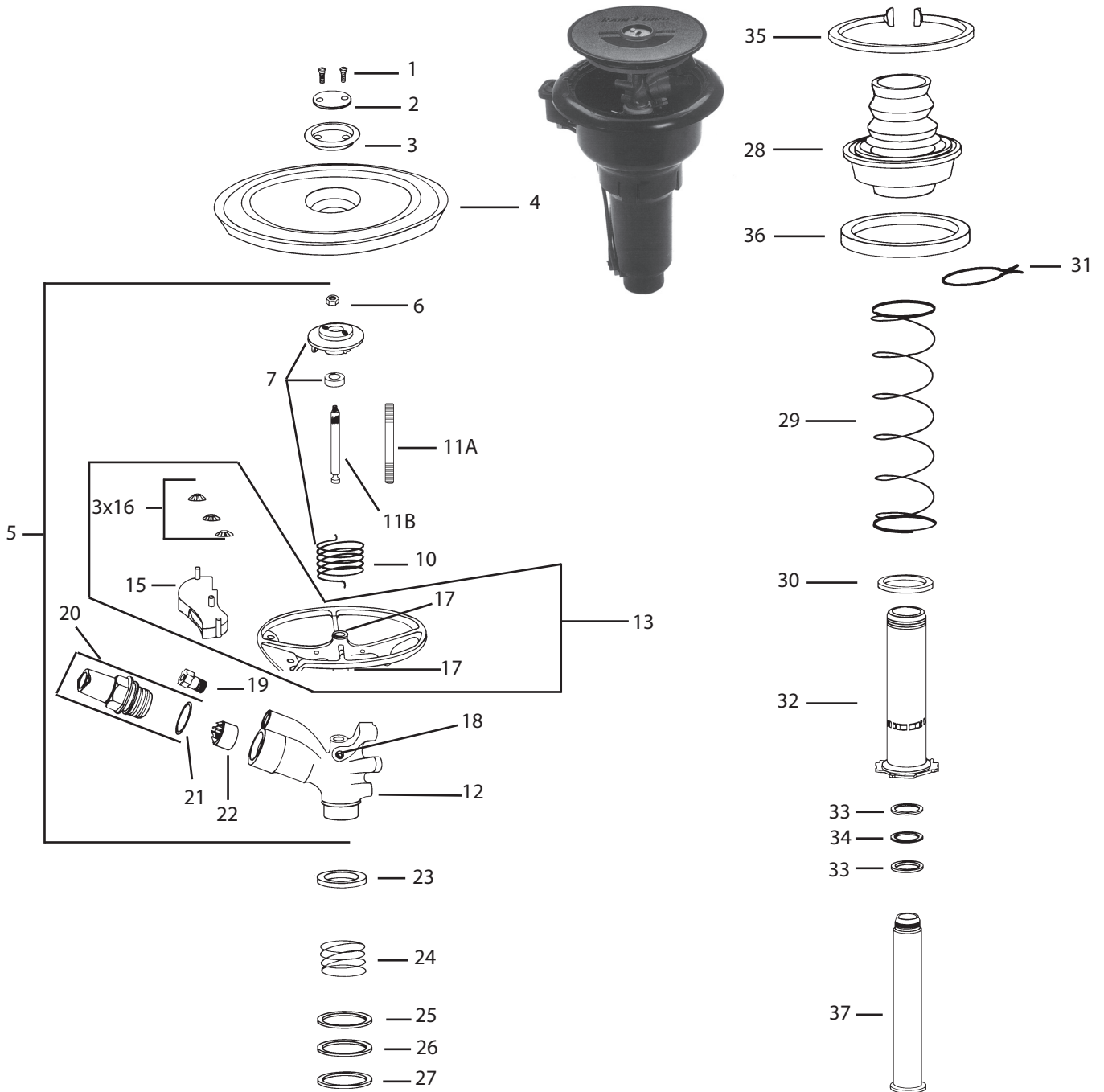
FULL CIRCLE ROTOR

91DR / 91DS / 91DH

Ref. No. : 491

Date : 03/2005

Page : 1 of 3



FULL CIRCLE ROTOR

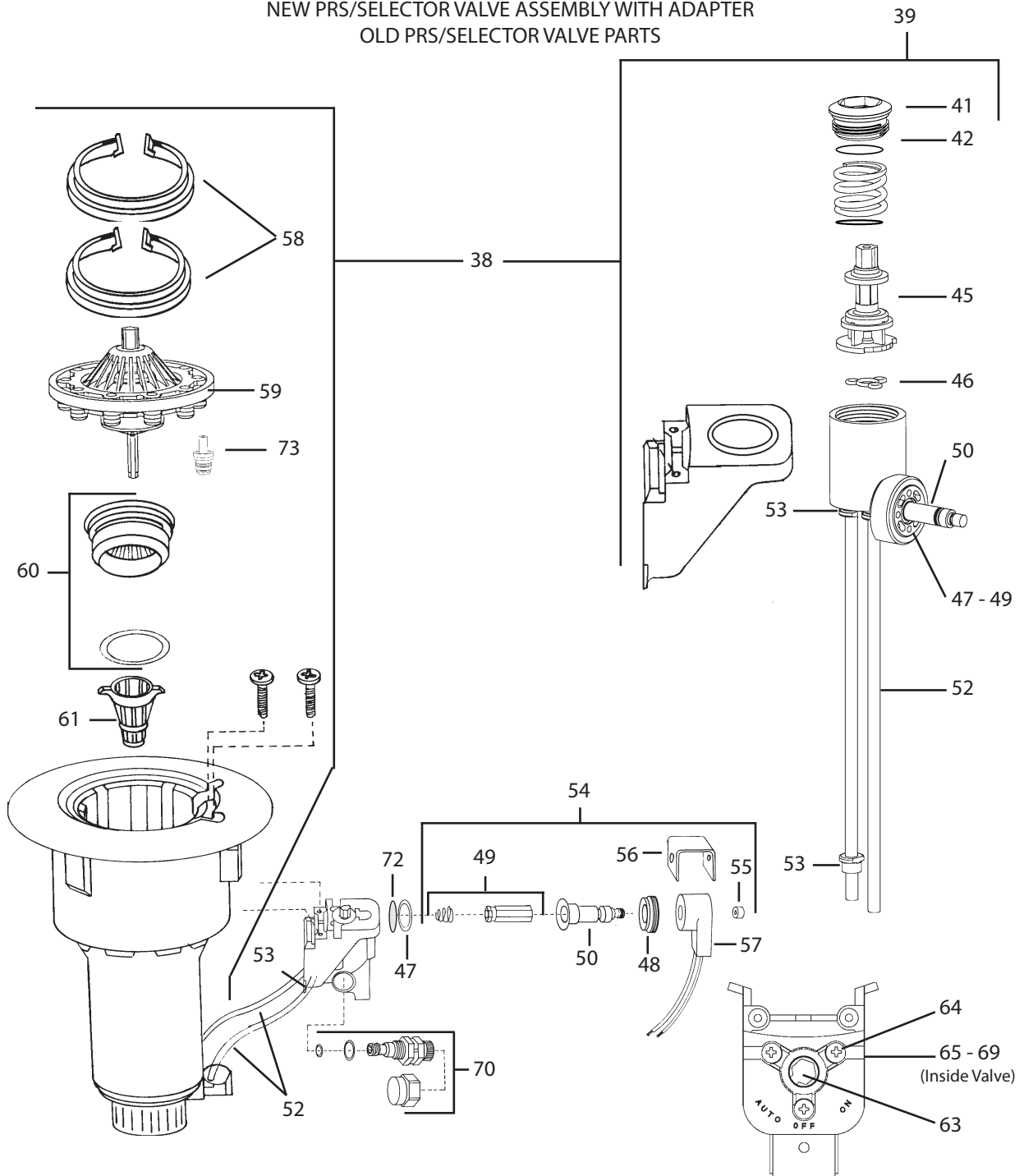
91DR / 91DS / 91DH

Ref. No. : 491

Date : 03/2005

Page : 2 of 3

NEW PRS/SELECTOR VALVE ASSEMBLY WITH ADAPTER OLD PRS/SELECTOR VALVE PARTS





FULL CIRCLE ROTOR

91DR / 91DS / 91DH

Ref. No. : 491

Date : 03/2005

Page : 3 of 3

Ref.	Part Description	91DR	91DS	91DH	Ref.	Part Description	91DR	91DS	91DH
*COVER ASSEMBLIES					CASE ASSEMBLY WITH NEW PRS/SELECTOR VALVE (Post 5/93)				
1	Cover Screws, Standard	200974	200974	200974	38	Case Assembly (BSP)	207995-02	208514-02	—
2	Retainer, Steel	202685	202685	202685	39	PRS/Selector Assembly	210808-03	—	—
3	Plastic Sand Cover	204749	204749	204749	41	Cover, Threaded (E)	(E)	—	—
4	Plastic Cover	208625	208625	208625	42	O-Ring, Stem Cover (E)	(E)	—	—
**INTERNAL ASSEMBLY 208237-30-15 208237-30-15 208237-30-15					45	PRS Cartridge (E)	(E)	—	—
UPPER ASSEMBLY (New Threaded Fulcrum Pin Version)					46	Seal, Selector (E)	(E)	—	—
5	Arm/Body Assy	203339-30-15	203339-30-15	203339-30-15	47	O-Ring, Solenoid Base	211237	—	—
	Body/Fulcrum Pin Assy	202686	202686	202686	48	Base Nut	602606	—	—
6	Fulcrum Nut	(A)	(A)	(A)	49	Plunger Assembly	629453	—	—
7	Cover Support Assy	210428	210428	210428	50	Tube, Welded	630028	—	—
10	Arm Spring	202699	202699	202699	52	Tubing (2)	205920-02	205920-02	—
11A	Fulcrum Pin - Threaded	(A)	(A)	(A)	53	Ferrule (2-DR, 1-DH)	206409	—	206409
12	Body	—	—	—	54	Solenoid Assembly	206920-01	—	—
13	Arm Assembly	203944	203944	203944	48	Base Nut	602606	—	—
15	PJ Tube Assembly	204723	204723	204723	49	Plunger Assembly	629453	—	—
16	Pushnut (3)	203638	203638	203638	50	Tube, Welded	630028	—	—
17	Arm Bushings (2)	202826	202826	202826	55	Retainer, Rubber	627167	—	—
OLDER NON THREADED FULCRUM PIN PARTS					56	U-Frame	210914	—	—
7	Cover Support Assy	203285	203285	203285	57	Coil	602118	—	—
10	Arm Spring	202699	202699	202699	58	Snap Ring, Lower (2)	208396	208396	208396
	Fulcrum Pin Repair Kit	210068	210068	210068	59	HPDV Valve Assembly	211266	212323	212323
6	Fulcrum Nut	—	—	—	73	Probe and O-ring Assembly	207402	207402	207402
11B	Fulcrum Pin-NON-THD'D	—	—	—		HFDV Repair Kit	207594	208439	208439
18	Set Screw	209803	209803	209803	60	Inlet Adapter	207654	207654	207654
NOZZLES					61	Inlet Screen	209923	209923	209923
19	Drive Nozzle	206081	206081	206081	OLD SELECTOR VALVE PARTS (Pre 5/93)				
20	Range Nozzle Assy	(B) 204182-xx	(B) 204182-xx	(B) 204182-xx		Selector Valve Stem Repair Kit	210069	—	—
21	O-Ring	203316	203316	203316	63	Stem Assembly	—	—	—
22	Vane	202441	202441	202441	64	Screws (3)	—	—	—
BEARING ASSY (Sandboot Style)					65	O-Ring (4)	(F)	—	—
23	Bearing Hood	(C)	(C)	(C)	66	Compression Spring	—	—	—
24	Bearing Spring	(C)	(C)	(C)	67	Spring Washer (2 or 3)	—	—	—
	Sandboot Kit	208468	208468	208468	69	Seal O-Ring	209656	—	—
25	Spring Support Washer	(C)	(C)	(C)	70	Pressure Regulator	208206	—	—
26	Teflon Top Seal Washer	(C)	(C)	(C)	47	O-Ring, Solenoid Base	202882	—	—
27	Upper Brg Seal Washer	(C)	(C)	(C)	54	Solenoid Assembly	206920-01	—	—
28	Bellows/Bearing Guide	—	—	—	48	Base Nut	602606	—	—
29	Retract Spring	—	—	—	49	Plunger Assembly	629453	—	—
30	Buna N Guide Seal	(C)	(C)	(C)	50	Tube, Welded	630028	—	—
31	Friction Collar (1)	202429	202429	202429	55	Retainer, Rubber	627167	—	—
32	Bearing Sleeve Assembly	203126	203126	203126	56	U-Frame	210914	—	—
33	Brg Washer (Black) (2)	(C)	(C)	(C)	57	Coil	602118	—	—
34	Wear Washer (Gold)	(C)	(C)	(C)	52	Tubing (2)	205920-02	205920-02	—
35	Upper Snap Ring	208395	208395	208395	53	Ferrule (2-DR, 1-DH)	206409	—	206409
36	Lower Seal	211239	211239	211239	72	Screen	203327	—	—
37	Bearing Nipple	202928	202928	202928	(E) Included in new style PRS/Selector Repair Kit # 210166. ** Includes #5 to #37 (F) Selector Valves made before 6/88 used three (3) O-Rings # 211238 * Rubber cover (# P00071) and artificial grass cover (# P00094) kits are available. Consult the current whole goods price list.				

(A) Included in Fulcrum Repair Kit # 211022.
 (B) Specify nozzle size when ordering (18,20,22,24,26,28,30)
 (C) Included in Bearing Washer Kit # 204179.

SPORTSFIELD FULL CIRCLE ROTOR

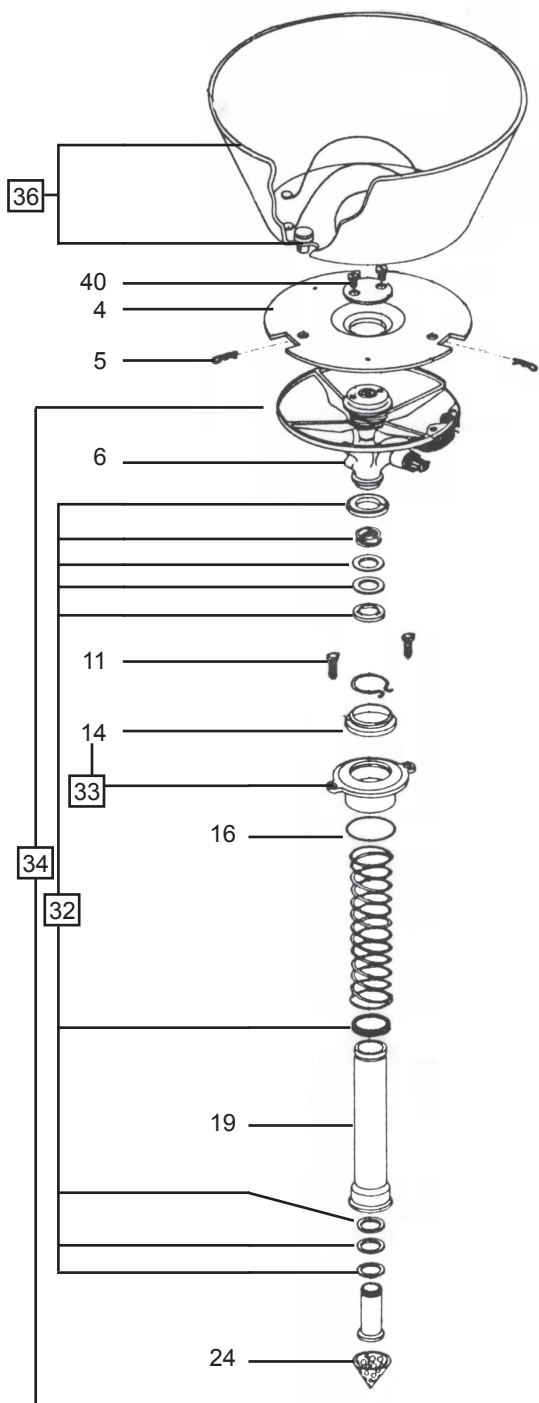
91D-HL

Ref.No. : 491E

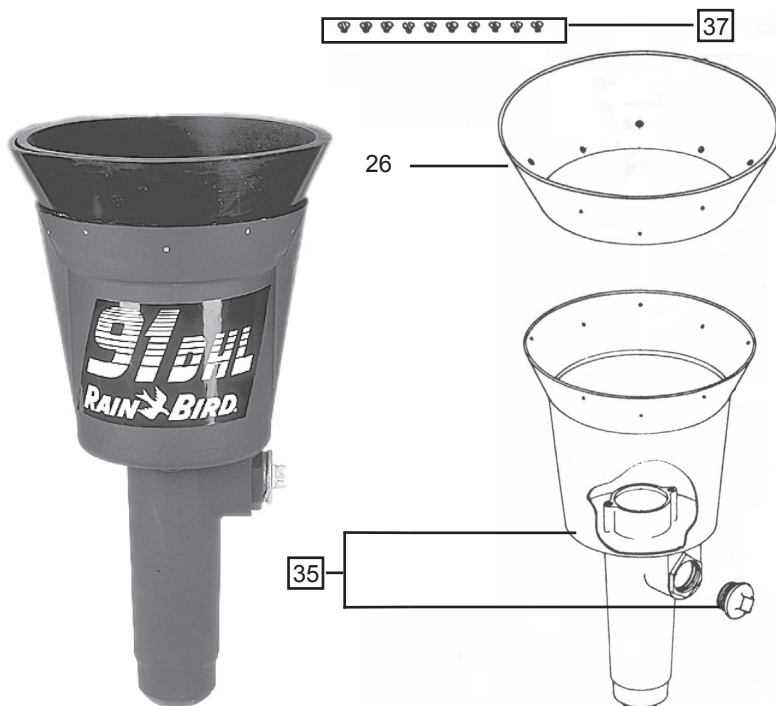
Date : 03/2005

Page: 1 of 1

Ref.	Part Description	Qty.	91D-HL
4	Cover	1	71-P00015
5	Pin	3	71-P00018
6	Head Assembly	1	71-P50402
11	Guide Screw kit	2	71-P00024
14	Wiper Seal	1	72-207775
16	O-Ring	1	71-P00020
19	Bearing Sleeve	1	71-P00092
24	Screen	1	71-P00809
26	Basket Insert	1	71-P00017
32	Washer Kit	1	71-P00710
33	Bearing Guide Assembly	1	71-P00711
34	Internal Assembly	1	71-P00121
35	Case Assembly	1	71-P00712
36	Basket Assembly	1	71-P00062
37	Basket Insert Screw Kit	1	71-P00708
40	Cover Screw	2	200974



(A) Included in Item 36



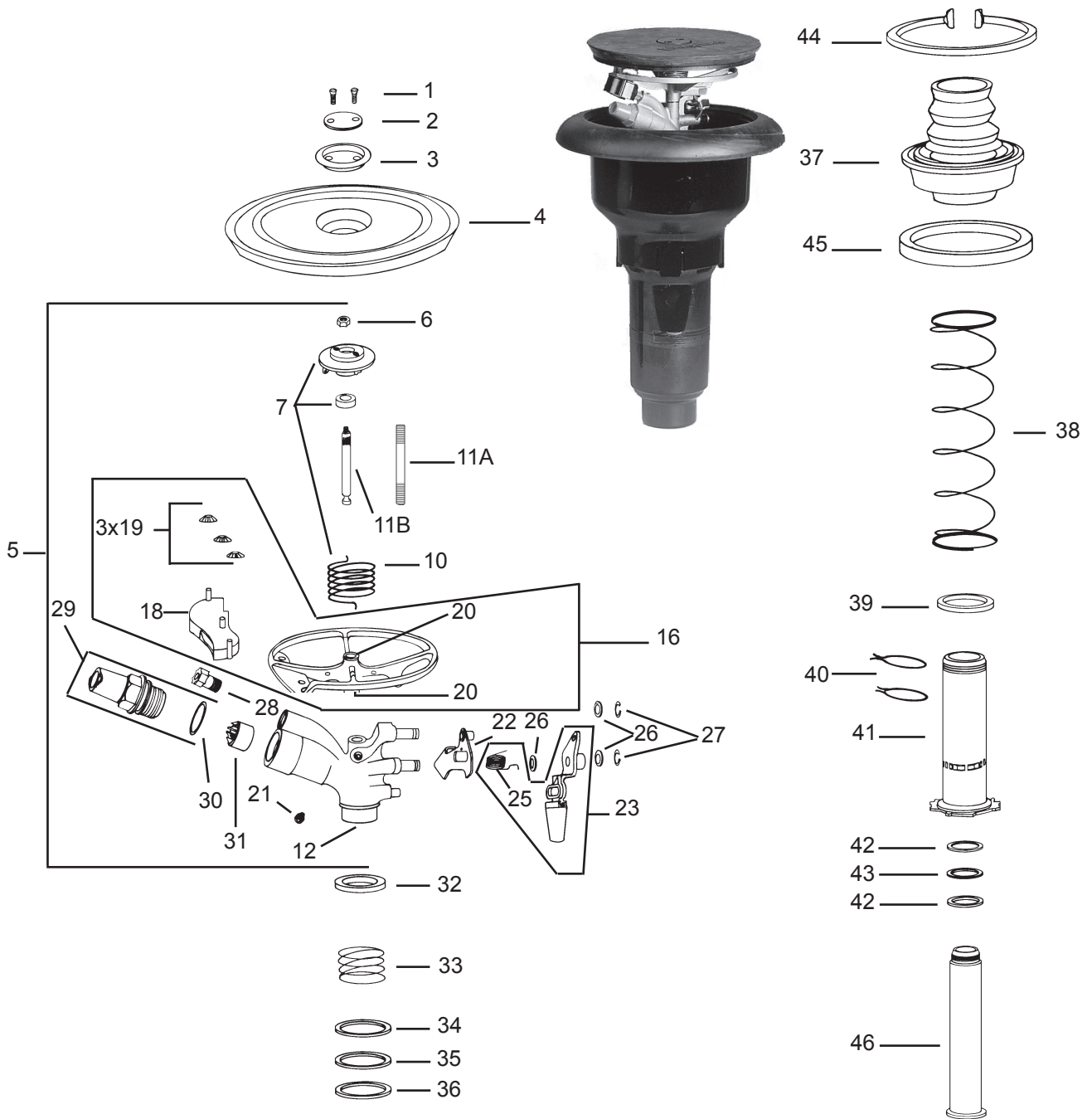
PART CIRCLE ROTOR

95DR / 95DS / 95DH

Ref. No. : 495

Date : 03/2005

Page : 1 of 3



PART CIRCLE ROTOR

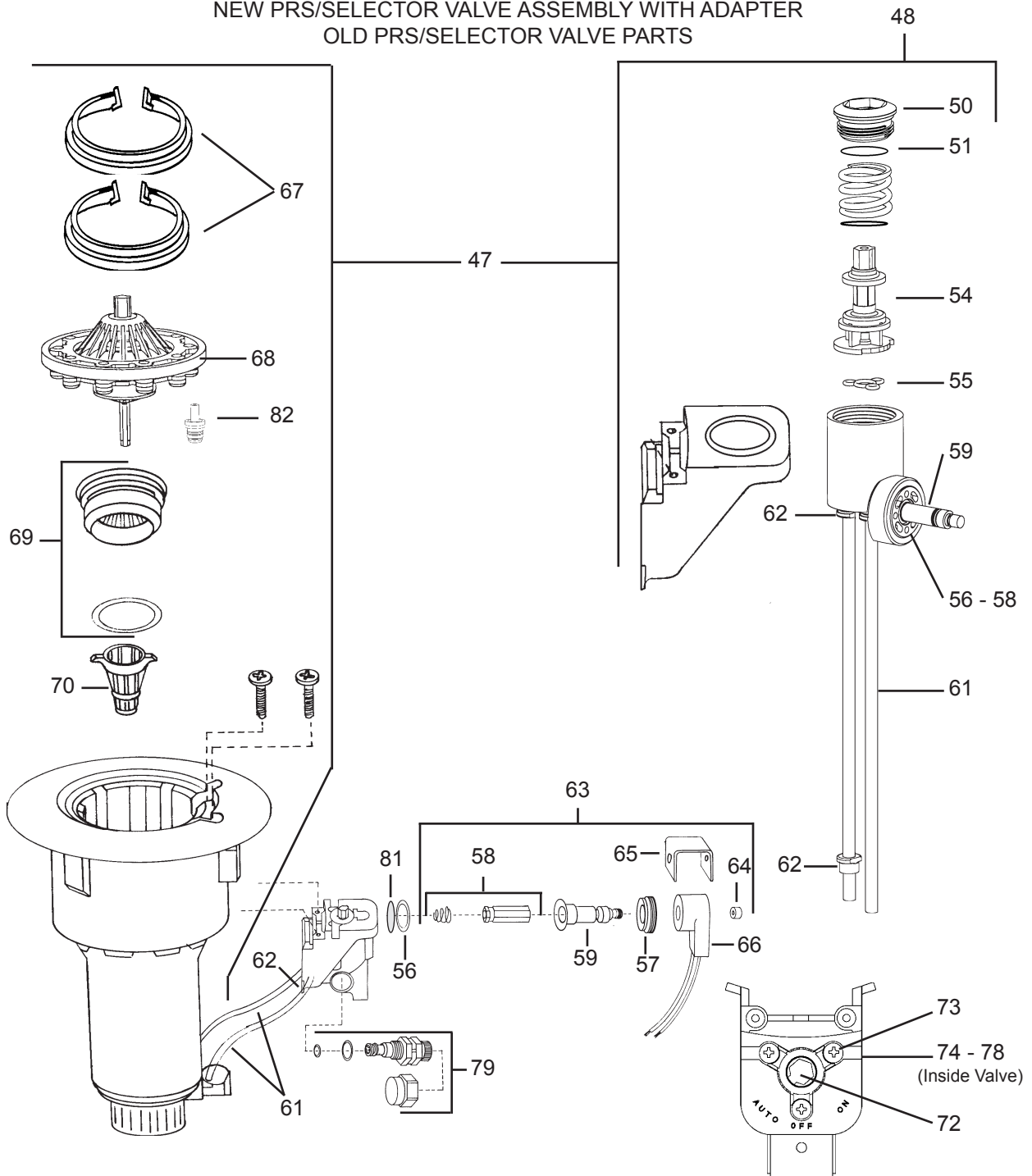
95DR / 95DS / 95DH

Ref. No. : 495

Date : 03/2005

Page : 2 of 3

NEW PRS/SELECTOR VALVE ASSEMBLY WITH ADAPTER OLD PRS/SELECTOR VALVE PARTS





PART CIRCLE ROTOR

95DR / 95DS / 95DH

Ref. No. : 495

Date : 03/2005

Page : 3 of 3

Ref.	Part Description	95DR	95DS	95DH	Ref.	Part Description	95DR	95DS	95DH
* COVER ASSEMBLIES					CASE ASSEMBLY WITH NEW PRS/SELECTOR VALVE (Post 5/93)				
1	Cover Screws, Standard	200974	200974	200974	47	Case Assembly (BSP)	207995-02	208514-02	—
2	Retainer, Steel	202685	202685	202685	48	PRS/Selector Assembly	210808-03	—	—
3	Plastic Sand Cover	204749	204749	204749	50	Cover, Threaded (F)	(F)	—	—
4	Plastic Cover	208625	208625	208625	51	O-Ring, Stem Cover (F)	(F)	—	—
**INTERNAL ASSEMBLY 208236-30-15 208236-30-15 208236-30-15					54	PRS Cartridge (F)	(F)	—	—
UPPER ASSEMBLY (New Threaded Fulcrum Pin Version)					55	Seal, Selector (F)	(F)	—	—
5	Arm/Body Assy	203122-30-15	203122-30-15	203122-30-15	56	O-Ring, Solenoid Base	211237	—	—
	Body/Fulcrum Pin Assy	202686	202686	202686	57	Base Nut	602606	—	—
6	Fulcrum Nut	(A)	(A)	(A)	58	Plunger Assembly	629453	—	—
7	Cover Support Assy	210428	210428	210428	59	Tube, Welded	630028	—	—
10	Arm Spring	202699	202699	202699	61	Tubing (2)	205920-02	205920-02	—
11A	Fulcrum Pin-Threaded	(A)	(A)	(A)	62	Ferrule (2-DR, 1-DH)	206409	—	206409
12	Body	—	—	—	63	Solenoid Assembly	206920-01	—	—
16	Arm Assembly	203944	203944	203944	57	Base Nut	602606	—	—
18	PJ Tube Assembly	204723	204723	204723	58	Plunger Assembly	629453	—	—
19	Pushnut (3)	203638	203638	203638	59	Tube, Welded	630028	—	—
20	Arm Bushings (2)	202826	202826	202826	64	Retainer, Rubber	627167	—	—
OLDER NON THREADED FULCRUM PIN PARTS					65	U-Frame	210194	—	—
7	Cover Support Assy	203285	203285	203285	66	Coil	602118	—	—
10	Arm Spring	202699	202699	202699	67	Snap Ring, Lower (2)	208396	208396	208396
	Fulcrum Pin Repair Kit	210068	210068	210068	68	HPDV Valve Assembly	211266	212323	212323
6	Fulcrum Nut	—	—	—	82	Probe and O-Ring Assembly	207402	207402	207402
11B	Fulcrum Pin-NON THD'D	—	—	—		HFDV Repair Kit	207594	208439	208439
21	Set Screw	209803	209803	209803	69	Inlet Adapter	207654	207654	207654
TRIP MECHANISM (Included in Arm/Body Assembly # 5)					70	Inlet Screen (Post 7/93)	209923	209923	209923
22	Upper Trip Assembly	200773	200773	200773	OLD SELECTOR VALVE PARTS (Pre 5/93)				
23	Lower Trip Assy (Post-6/94)	211186	211186	211186		Selector Valve Stem Repair Kit	210069	—	—
25	Trip Spring	(B)	(B)	(B)	72	Stem Assembly	—	—	—
26	Spacer Washers (3)	(B)	(B)	(B)	73	Screws (3)	—	—	—
27	E-Ring (2)	(B) 200975	(B) 200975	(B) 200975	74	O-Ring (4)	(G)	—	—
NOZZLES (Included in Arm/Body Assembly # 5)					75	Compression Spring	—	—	—
28	Drive Nozzle	206910	206910	206910	76	Spring Washer (2 or 3)	—	—	—
29	Range Nozzle Assy (C)	204182-xx	204182-xx	204182-xx	78	Seal O-Ring	209656	—	—
30	O-Ring	203316	203316	203316	79	Pressure Regulator	208206	—	—
31	Vane	202441	202441	202441	56	O-Ring, Solenoid Base	202882	—	—
BEARING ASSY (Sandboot Style)					63	Solenoid Assembly	206920-01	—	—
32	Bearing Hood	(D)	(D)	(D)	57	Base Nut	602606	—	—
33	Bearing Spring	(D)	(D)	(D)	58	Plunger Assembly	629453	—	—
	Sandboot Kit	208468	208468	208468	59	Tube, Welded	630028	—	—
34	Spring Support Washer	(D)	(D)	(D)	64	Retainer, Rubber	627167	—	—
35	Teflon Top Seal Washer	(D)	(D)	(D)	65	U-Frame	210194	—	—
36	Upper Brg Seal Washer	(D)	(D)	(D)	66	Coil	602118	—	—
37	Bellows/Bearing Guide	—	—	—	61	Tubing (2)	205920-02	205920-02	—
38	Retract Spring	—	—	—	62	Ferrule (2-DR, 1-DH)	206409	—	206409
39	Buna N Guide Seal	(D)	(D)	(D)	81	Screen	203327	—	—
40	Friction Collars (2)	202429	202429	202429	(A) Included in Fulcrum Repair Kit # 211022.				
41	Bearing Sleeve Assembly	203126	203126	203126	(B) Included in Trip Spring & Washer Kit # 209361.				
42	Brg Washer (Black) (2)	(D)	(D)	(D)	** Includes #5 to #46				
43	Wear Washer (Gold)	(D)	(D)	(D)	(C) Specify nozzle size when ordering (18,20,22,24,26,28,30)				
44	Upper Snap Ring	208395	208395	208395	(D) Included in Bearing Washer Kit # 204179.				
45	Seal, bearing Guide (Red)	211239	211239	211239	(E) Included in new style PRS/Selector Repair Kit # 210166.				
46	Bearing Nipple	202928	202928	202928	(G) Selector Valves made before 6/88 used three (3) O-Rings # 211238.				

*Rubber cover (#P00071) and artificial grass cover (#P00094) kits are available. Consult the current whole goods price list.

FULL CIRCLE ROTOR

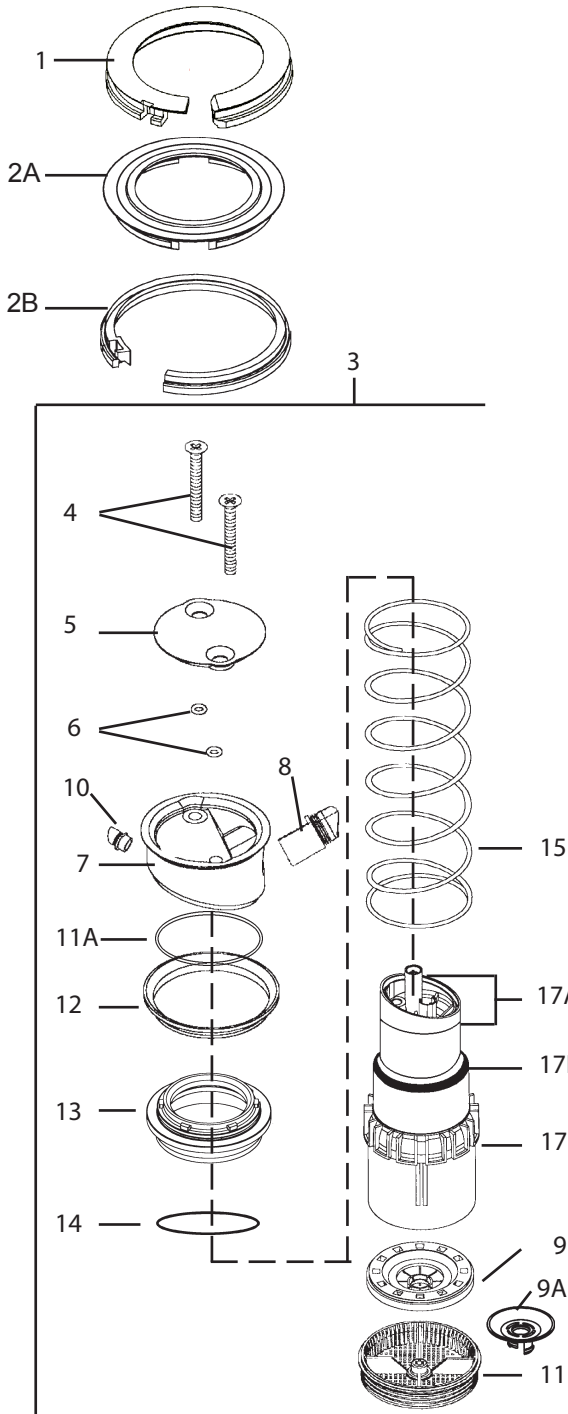
EAGLE - 900 SERIES



Ref. No. : 496

Date : 03/2005

Page : 1 of 2



Ref.	Part Description	Qty.	900-E	900-S	900-H
SNAP RINGS					
1	Snap Cover (all models)	1	211934-01	211934-01	211934-01
2A	Cover, Rubber		included in 211598		
2B	Snap Ring, Upper		included in 211598		
INTERNAL ASSEMBLY					
3	Internal Assembly	1	210786-60	211918-60	210786-60
* COVER ASSEMBLY					
4	Screw, 1/4 - 15	2	210975	210975	210975
5	Cover, Housing	1	211966	211966	211966
6	O-Ring, Screw	2	209778	209778	209778
**NOZZLES					
	Nozzle/Housing/Stator Kit (A)	1	212067-xx	212067-xx	212067-xx
	Nozzle/Housing/Stator Kit (B)	1	210422-xx	210422-xx	210422-xx
	Nozzle/Housing/Stator Kit (C)	1	211216-xx	211216-xx	211216-xx
7	Housing, Nozzle - Black (E)	1	—	—	—
8	Nozzle Assembly, Range	1	—	—	—
10	Spreader Nozzle Assembly	1	—	—	—
9A	Poppet	1	—	—	—
9	Stator	1	—	—	—
12	Seal, Retract	1	210231	210231	210231
11	Screen	1	210232	210232	210232
BEARING / RISER-MOTOR ASSEMBLY					
11A	O-Ring, Nozzle Housing	1	210168	210168	210168
13	Guide, Bearing, STD	1	211460	—	211460
13	Guide, Bearing, LO-FLOW	1	—	211461	—
14	O-Ring, Bearing Guide	1	212383	212383	212383
15	Spring, Retract	1	—	—	—
17	Riser Motor Assembly	1	209836	209836	209836
17A	Nozzle Base Replacement Kit w/Seal	1	212060	212060	212060
17B	Pop-up Seal (White)	1	209781	209781	209781
CASE ASSEMBLIES					
18	Case Assembly (BSP)	1	212472-03	212474	212473
19	PRS/Selector Assy (>6/95) 2 tubes	1	211418	—	—
21	Cover, Threaded (F)	1	(F)	—	—
22	O-Ring, Stem Cover (F)	1	(F)	—	—
24	Selector Washer	1	210040	—	—
25	PRS Cartridge (F)	1	(F)	—	—
26	Seal, Selector (F)	1	(F)	—	—
20	PRS/Housing Kit (>6/95) 2 tubes	1	211386	—	—
27	Base Nut	1	602606	—	—
29	Tube, Welded	1	630028	—	—
	Plunger Assembly (not shown)	1	629453	—	—
30	Tubing	1	205920-02	205920-02	—
32	Ferrule	2	206409	—	206409
33	Solenoid Assembly	1	206920-01	—	—
	Plunger Assembly (not shown)	1	629453	—	—
34	Retainer, Rubber	1	627167	—	—
35	U-Frame	1	210914	—	—
36	Coil	1	602118	—	—
37	Snap Ring, Lower	2	208396	208396	208396
38	HPDV Valve Assembly	1	211266	212323	212323
	HFDV Diaphragm Assembly Kit (<8/99)	1	207594	208439	208439
	(Not Shown)				
39	Screen, Inlet (<9/98)	1	209923	209923	209923
40	Top Serviceable Rock Screen	1	211714-02	211714-02	211714-02
41	Probe & O-ring Assembly	1	207402	207402	207402

(A) Specify Nozzle Size when ordering. Available in # 44, 48, 52, 56, 60, 64

(B) Specify Nozzle Size when ordering. Available in # 18, 22, 24.

(C) Specify Nozzle Size when ordering. Available in # 20, 26, 28, 30, 32.

**Diffuser Screw Kit: 212144 (not compatible with Nozzles #18, 22, 24)

(E) The Nozzle Housing was changed 8/99 to accommodate the new Spreader for the High performance nozzles. All 900 rotors and nozzle/stator kits manufactured after 8/99 have the new Nozzle Housing. (F) Included in PRS/Selector Repair Kit # 210166. Use 212150 for cases made after 5/2001. * Rubber cover (#211598) and artificial grass cover (#P00904) kits are available for old cases. Rubber cover kit for new cases : 212553. Artificial grass cover kit for new cases : B99500

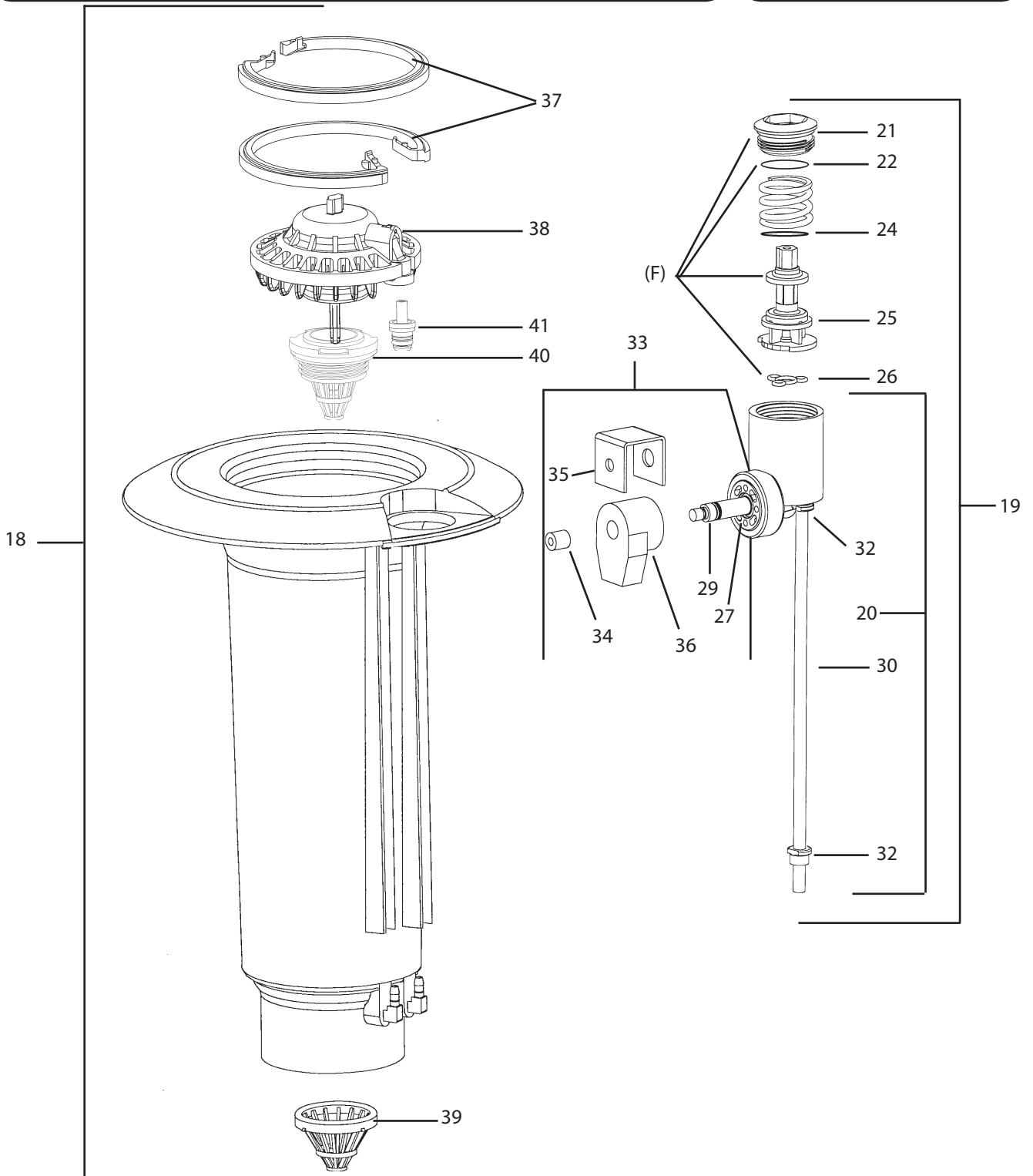
FULL CIRCLE ROTOR

EAGLE - 900 SERIES

Ref. No. : 496

Date : 03/2005

Page : 2 of 2



PART CIRCLE ROTOR

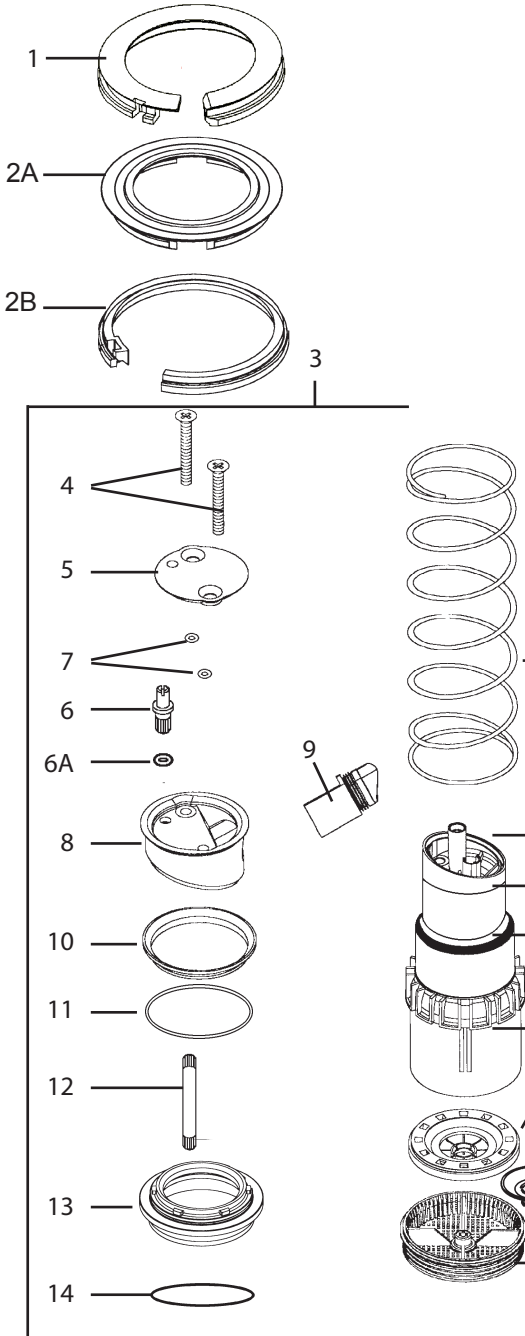
EAGLE - 950 SERIES



Ref. No. : 497

Date : 03/2005

Page : 1 of 2



Ref.	Part Description	Qty.	950-E	950-S	950-H
SNAP RINGS					
1	Snap Cover	1	211934-01	211934-01	211934-01
2A	Cover, Rubber		included in 211599		
2B	Snap Ring, Upper		included in 211599		
INTERNAL ASSEMBLY					
3	Internal Assembly	1	211442-28	211919-28	211442-28
* COVER ASSEMBLY					
4	Screw, 1/4 - 15	2	210975	210975	210975
	Oversized Arc Adjust & Cover Kit (A)		212158	212158	212158
5	Cover, Housing	1	—	—	—
6	Oversized Arc Adjust	2	—	—	—
6A	Quad Seal, Arc Adjust	1	—	—	—
7	O-Ring, Screw	2	209778	209778	209778
NOZZLES					
8	Housing, Nozzle - Black	1	211962	211962	211962
	Nozzle/Stator Kit - Cascade (B)	1	211441-xx	211441-xx	211441-xx
	Nozzle/Stator Kit - Non-Cascade (C)	1	211215-xx	211215-xx	211215-xx
9	Nozzle Assembly, Range	1	—	—	—
17	Poppet	1	—	—	—
18	Stator	1	—	—	—
10	Seal, Retract	1	210231	210231	210231
19	Screen	1	210232	210232	210232
BEARING / RISER-MOTOR ASSEMBLY					
11	O-Ring, Nozzle Housing	1	210436	210436	210436
12	Adjustment Stem	1	210837	210837	210837
13	Guide, Bearing, STD	1	211460	—	211460
13	Guide, Bearing, LO-FLOW	1	—	211461	—
14	O-Ring, Bearing Guide	1	212383	212383	212383
15	Spring, Retract	1	—	—	—
16	Riser Motor Assembly	1	210439	210439	210439
16A	Nozzle Base Replacement Kit w/Seal	1	212061	212061	212061
16B	Pop-up Seal (White)	1	209781	209781	209781
CASE ASSEMBLIES					
43	Case Assembly (BSP)	1	212472-03	212474	212473
20	PRS/Selector Assy (>6/95) 2 tubes	1	211418	—	—
22	Cover, Threaded (F)	1	(F)	—	—
23	O-Ring, Stem Cover (F)	1	(F)	—	—
25	Selector Washer	1	210040	—	—
26	PRS Cartridge (F)	1	(F)	—	—
27	Seal, Selector (F)	1	(F)	—	—
21	PRS/Housing Kit (>6/95)	1	211386	—	—
28	Base Nut	1	602606	—	—
30	Tube, Welded	1	630028	—	—
18	Plunger Assembly (not shown)	1	629453	—	—
31	Tubing	1	205920-02	205920-02	—
33	Ferrule	2	206409	—	206409
34	Solenoid Assy	1	206920-01	—	—
	Plunger Assy (not shown)	1	629453	—	—
35	Retainer, Rubber	1	627167	—	—
36	U-Frame	1	210914	—	—
37	Coil	1	602118	—	—
38	Snap Ring, Lower	2	208396	208396	208396
39	HPDV Valve Assembly	1	211266	212323	212323
	HFDV Diaphragm Assembly Kit (<8/99)	1	207594	208439	208439
	(Not Shown)				
40	Probe & O-ring Assembly	1	207402	207402	207402
41	Top Serviceable Rock Screen	1	211714-02	211714-02	211714-02
42	Screen, Inlet (<9/98)	1	209923	209923	209923

(A) New Oversized Arc Adjust incorporated 2/00.

(B) Specify Nozzle Size when ordering. Available in # 18, 20, 22, 24.

(C) Specify Nozzle Size when ordering. Available in # 26, 28, 30, 32.

Diffuser Screw Kit: 212145. Eagle Tail's Kit: 211900

(F) Included in PRS/Selector Repair Kit # 210166. Use 212150 for cases made after 5/2001

* Rubber cover (#211599) and artificial grass cover (#P00904) kits are available for old cases. Rubber cover kit for new cases : 212554. Artificial grass cover kit for new cases : B99500

PART CIRCLE ROTOR

EAGLE - 950 SERIES

Ref. No. : 497

Date : 03/2005

Page : 2 of 2

